

TO MEMBERS OF THE COUNCIL

Notice is hereby given that a meeting of the Council of the London Borough of Bromley is to be held in the Council Chamber at Bromley Civic Centre on Monday 18 October 2021 at 7.00 pm, or on the rising of the special Council meeting, which meeting the Members of the Council are hereby summoned to attend.

PLEASE NOTE: This meeting will be held in the Council Chamber at the Civic Centre, Stockwell Close, Bromley, BR1 3UH. Members of the public can attend the meeting: you can ask questions submitted in advance (see item 4 on the agenda) or just observe the meeting. There will be limited space for members of the public to attend the meeting – if you wish to attend please contact us, before the day of the meeting if possible, using our web-form:

<https://www.bromley.gov.uk/CouncilMeetingNoticeOfAttendanceForm>

Please be prepared to follow the identified social distancing guidance at the meeting, including wearing a face covering.

Prayers

A G E N D A

- 1 Apologies for absence
- 2 Declarations of Interest
- 3 To confirm the Minutes of the meeting of the Council held on 12 July 2021 (Pages 3 - 54)
- 4 Questions (Pages 55 - 66)

In accordance with the Council's Constitution, questions that are not specific to reports on the agenda must have been received in writing 10 working days before the date of the meeting – by 4th October.

Questions specifically on reports on the agenda should be received within two working days of the normal publication date of the agenda. Please ensure that questions specifically on reports on the agenda are received by the Democratic Services Team by 5pm on 12th October 2021.

- (a) Questions from members of the public for oral reply.
- (b) Questions from members of the public for written reply.
- (c) Questions from members of the Council for oral reply.
- (d) Questions from members of the Council for written reply.

- 5 To consider any statements that may be made by the Leader of the Council, Portfolio Holders or Chairmen of Committees.
- 6 Making Bromley Even Better
(Pages 67 - 108)
- 7 Health and Wellbeing Board Annual Report 2020/21
(Pages 109 - 114)
- 8 Councillor Attendance 2020/21
(Pages 115 - 122)
- 9 To consider Motions of which notice has been given.
- 10 The Mayor's announcements and communications.

.....

Ade Adetosoye

Ade Adetosoye OBE
Chief Executive

BROMLEY CIVIC CENTRE
BROMLEY BR1 3UH
Friday 8 October 2021
Vol.58 No.4

LONDON BOROUGH OF BROMLEY

MINUTES

of the proceedings of the meeting of the
Council of the Borough
held at 7.00 pm on 12 July 2021

Present:

The Worshipful the Mayor
Councillor Russell Mellor

The Deputy Mayor
Councillor Tony Owen

Councillors

Vanessa Allen
Graham Arthur
Kathy Bance MBE
Yvonne Bear
Nicholas Bennett MA J.P.
Kim Botting FRSA
Mike Botting
Kevin Brooks
David Cartwright QFSM
Peter Dean
Ian Dunn
Robert Evans
Simon Fawthrop
Will Harmer
Christine Harris

Colin Hitchins
Samaris Huntington-
Thresher
William Huntington-
Thresher
Simon Jeal
David Jefferys
Charles Joel
Josh King
Kate Lymer
Christopher Marlow
Robert Mcilveen
Alexa Michael
Angela Page
Neil Reddin FCCA

Michael Rutherford
Colin Smith
Diane Smith
Gary Stevens
Melanie Stevens
Harry Stranger
Kieran Terry
Ryan Thomson
Michael Tickner
Pauline Tunnicliffe
Stephen Wells
Angela Wilkins

In the Chair
The Mayor
Councillor Russell Mellor

272 Apologies for absence

Apologies for absence were received from Councillors Gareth Allatt, Julian Benington, Katy Boughey, Mark Brock, Mary Cooke, Aisha Cuthbert, Nicky Dykes, Judi Ellis, Peter Fortune, Kira Gabbert, Robert Mcilveen, Peter Morgan, Keith Onslow, Will Rowlands, Richard Scoates, Suraj Sharma, Gary Stevens and Michael Turner.

The Mayor thanked those Members who had voluntarily decided not to attend to assist with social distancing.

273 Declarations of Interest

There were no declarations of interest.

The report on Interim Delegations (minute 281) affected both the Chief Executive and the Director of Corporate Services, but Members agreed that both should remain in the chamber for this item.

274 To confirm the Minutes of the meeting of the Council held on 19th May 2021

RESOLVED that the minutes of the meeting held on 19 May 2021 be confirmed.

275 Questions

Six questions had been received from members of the public for written reply. The questions, with the answers given, are set out in Appendix A to these minutes.

Twenty four questions had been received from members of the public for written reply. The questions, with the answers given, are set out in Appendix B to these minutes.

Fifteen questions had been received from members of the Council for oral reply. The questions, with the replies given, are set out in Appendix C to these minutes.

Nine questions had been received from members of the Council for written reply. The questions, with the answers given, are set out in Appendix D to these minutes.

276 To consider any statements that may be made by the Leader of the Council, Portfolio Holders or Chairmen of Committees.

(1) Emma Raducanu

Councillor Peter Morgan, Portfolio Holder for Renewal, Recreation and Housing, had given notice that he wished to make a statement. As he was not able to attend the meeting, the Leader made the statement on his behalf. The Leader explained that, having watched Emma Raducanu at Wimbledon Councillor Morgan had already asked the Mayor to send congratulations on behalf of the Council, and also to congratulate Evelyn Davis of Bromley Swimming Club for her swimming achievements, and to wish good luck to Dina Asher-Smith at the Tokyo Olympic Games.

(2) Holiday Activities food Programmes Grant

Councillors Angela Wilkins and Simon Jeal had requested a statement from the Portfolio Holder for Children, Education and Families on the arrangements made to distribute the Government Holiday Activities and Food Programmes Grant allocated to the Council for the summer holiday period and to give an update on progress to date.

The Portfolio Holder, Councillor Kate Lymer, explained that, due to Covid-19 restrictions and the lateness of the funding, activities at Easier had been limited to looked after children. For the summer, with more time to plan and a dedicated coordinator in place to organise and publicise the activities. The programme would be run out of the four youth hubs, but with much more activities now that the restrictions would be eased. The six Children's Centres would also be offering activities throughout the summer, there would be a community fun day in Mottingham and voluntary organisations would be offering a range of events including a month-long sports summer camp for nearly a hundred children a day at The Warren. There would be a range of activities for looked after children. Families with a social worker would be offered Section 17 money for specific family days out during the summer.

In response to a question from Councillor Simon Jeal about the measures taken to ensure that activities were affordable and accessible to families in deprived areas, Councillor Lymer stated that 85% of places were for children who received free school meals and would be free to them. Councillor Angela Wilkins asked for more detail on the provision of food, and referred to a scheme in Crystal Palace ward at Easter which was not limited to looked after children. Councillor Lymer offered to investigate this particular scheme further, but confirmed that schemes were expected to provide a hot meal, either breakfast or lunch. The children, and the parents if they were there, would be encouraged to participate in preparing the food themselves. Supermarket vouchers were being provided through the Covid Local Support Grant and that scheme would be extended over the summer period – families eligible for free school meals would be given £90.

(3) Covid-19 Infection Control and Protection

Councillors Angela Wilkins and Simon Jeal had requested a statement from the Portfolio Holder for Adult Care and Health explaining what measures the Council would take with respect to Covid-19 infection prevention and control to protect staff and residents including those who are immune-compromised, disabled or clinically vulnerable and those who have not yet been, or are unable to be, vaccinated, when accessing Council services (including, but not limited to, domiciliary care and other care services) after 19th July.

The Portfolio Holder, Councillor Diane Smith, stated that the Chief Executive, as Head of Paid Service, had authorised the following measures to protect staff. Social distancing of 2m would be maintained in Council buildings and a maximum of 25% rising to 50% of staff would be expected to work in Council buildings with an online desk booking system in place. All Council buildings

would have enhanced cleaning, with reception area touch-points cleaned twice each day. Hand washing messages would be reinforced and hand sanitising gels would be provided. All staff would be encouraged to continue to wear face-coverings, particularly when coming in contact with the public. Online meeting platforms would continue to be used to avoid the need for large groups of staff to gather. Staff would be encouraged to take twice-weekly lateral flow tests at the Civic Centre. Residents visiting the Civic Centre would be encouraged to wear face-coverings, sanitising gel would be available and social distancing measures would be in place. The Council would ensure that front line care managers visiting people in care homes were vaccinated in line with guidance and legislation, and communicate the need for domiciliary care agencies to maintain similar measures. The Council would continue to encourage residents to be tested regularly using the test site at the Civic Centre. The Council recognised that some residents might not be able to access Council offices for medical reasons and would offer bespoke support such as online or telephone assessments. The Council would continue to work with Public Health England to reinforce key messages on vaccination, testing and other protective measures. These measures were above what was required after 19th July, but were aimed at ensuring the safety of staff and residents. The measures would be reviewed on a regular basis with the Chief Executive and the Director of Public Health.

In response to a question from Council Simon Jeal, Councillor Smith confirmed that it was too early to require care worker staff visiting residents to be double vaccinated, although the vaccine roll-out was progressing well in Bromley. Face coverings were a matter of personal choice, and should be worn by carers if a resident requested. Face coverings were still expected and domiciliary care providers would be expected to provide their staff with appropriate PPE.

In response to a question from Councillor Nicholas Bennett who suggested that very soon there would be no excuse for Members and officers coming into contact with the public not to be double vaccinated, the Portfolio Holder stated that she expected the Government to mandate that people working in care homes should be fully vaccinated.

277 Treasury Management - Annual Report 2020/21
Report CSD21079

A motion to note the Treasury Management Annual Report 2020/21 and approve the actual prudential indicators in the report was moved by Councillor Graham Arthur, seconded by Councillor Colin Smith and **CARRIED**.

278 Provisional Final Accounts 2020/21
Report CSD21080

A motion to agree that a sum of £3.887m be set aside as a contribution to the Housing Invest to Save Fund as detailed in paragraph 12.7 of the report, and to agree that a sum of £6.506m be set aside as a Covid impact/recovery earmarked reserve as detailed in paragraph 12.6 of the attached report was

moved by Councillor Graham Arthur, seconded by Councillor Colin Smith and **CARRIED**.

279 Capital Programme Outturn 2020/21
Report CSD21081

A motion to approve the increase of £2,443k to the Disabled Facilities Grant Scheme to reflect the 2021/22 allocation as detailed in paragraph 3.2.1 of the report was moved by councillor Graham Arthur, seconded by Councillor Colin Smith and **CARRIED**.

280 York Rise, Orpington
Report DCS21082

A copy of the part 2 report to the Executive was tabled.

A motion to approve a supplementary estimate of £2.1m as detailed in the report, and to approve the revised financing of the scheme as set out in paragraph 14.10 of the report, including an internal loan from the General Fund to the Housing Revenue Account of £6,064k, was moved, seconded and **CARRIED**.

(Councillors Robert Evans, Charles Joel and Christopher Marlow requested that their abstention be recorded.)

281 Interim Delegations
Report DCS210083

Councillors Pauline Tunnicliffe, Colin Smith, Angela Wilkins, Hannah Gray, Simon Fawthrop and the Mayor, Councillor Russell Mellor, thanked Mark Bowen for his service to the Borough, and he thanked them for their kind words.

A motion to record the Council's grateful appreciation for the service of Mr Mark Bowen, Director of Corporate Services, having served the borough and its residents for fifteen years, and, on his retirement and until the appointment of the new Director of Corporate Services and Governance, to delegate the formal responsibilities of his post as follows –

- Returning Officer and Electoral Registration Officer – Ade Adetosoye, Chief Executive
- Data Protection Officer – Vinit Shukle, Assistant Director, IT
- Monitoring Officer and all other legal functions – Shupriya Iqbal, Assistant Director, Legal Services

was moved by Councillor Pauline Tunnicliffe, seconded by Councillor Colin Smith and **CARRIED**.

282 To consider Motions of which notice has been given.

(1) E-Scooters

The following motion was moved by Councillor vanessa Alen and seconded by Councillor Ryan Thomson.

“This Council calls on the government to legislate on e-scooters as soon as possible and requests that the Portfolio Holder for Environment and Community Services writes setting out the Council’s concerns. This Council also requests that the Portfolio Holder for Environment and Community Services runs a public information campaign about e-scooters in the borough.”

An amendment was moved by Councillor Angela Wilkins and seconded by Councillor Kevin Brooks to insert the word “further” before “legislation.” This amendment was **LOST**.

On being put to the vote, the motion was **LOST**.

(2) Emma Raducanu

The following motion was moved by Councillor Kevin Brooks and seconded by Councillor Kathy Bance MBE

“The Council would like to give its support and sincere congratulations to Bromley resident Emma Raducanu, who broke a forty-two-year-old record to become the youngest British female tennis player in the Open Era to reach the round of 16 at Wimbledon. Eighteen-year-old Emma’s achievements have come alongside undertaking her A-Levels at Newstead Woods School.

The Council would also like to congratulate Bromley Tennis club and all the team there who have played a part in Emma’s progression within tennis.

As well as wishing Emma every success in the future the Council would like to officially recognise her current achievement and status as a positive role model in the Borough of Bromley. As such the Council requests that the Mayor write to Emma Raducanu on the Council’s behalf and presents a framed copy of this motion to her at the earliest opportunity.”

The motion was **CARRIED**.

283 The Mayor's announcements and communications.

The Mayor informed Members that he had presided over the annual Armed Forces Day Service on 24th June, and the Civic Service had been held on 27th June at St George’s Church, Beckenham. Both occasions had been very successful despite the limitations on the numbers of guests.

The Mayor reminded Members about the Autumn Ball which would be held on Saturday 16th October at The Warren in Hayes – information would be sent out shortly.

Bowls and Golf matches had now resumed, and it was hoped to put together a Mayor's cricket team – the Mayor thanked those Members who had responded to the call for cricketers. The Mayor also thanked the Deputy Mayor for his work putting together the Bromley Bridge tournament.

The Mayor asked Members who were aware of organisations seeking a visit from the Mayor or the Deputy Mayor to contact the Mayor's Office.

The Mayor concluded by stating that as soon as the restrictions were lifted he hoped to invite colleagues to join him for refreshments after Council meetings.

The Meeting ended at 9.21 pm

Mayor

This page is left intentionally blank

Council

12th July 2021

Questions from Members of the Public for Oral Reply

1. From Jasper Bell to the Portfolio Holder for Environment and Community Services (as Mr Bell was unable to attend the meeting, a written reply was sent.)

A number of pedestrian crossings near schools have been installed recently in the borough, for example near Newstead Wood and Tubbenden Primary, Bishop Challoner and Valley School. Could the Council please confirm the rationale for pedestrian crossings approved in the borough last year and the exact KSI levels they hit in order to gain approval?

Reply:

The KSI assessment is applied to direct Bromley's finite spend on casualty reduction schemes most effectively. That is not the only criterion for interventions. In the case of crossings care also has to be taken to ensure that crossings will not increase pedestrian collisions, a PV2 criterion is used to help.

The parallel zebra crossing in Crofton Road, near to Newstead Avenue, has been installed as part of a TfL funded scheme to improve cycling and walking in the vicinity of Orpington Station. The location seeing a very high concentration of pedestrians being the location of the second busiest station plus being in the vicinity of 5 schools. The parallel zebra crossing installed near to Bishop Challoner School forms part of an experimental cycling scheme, funded by DfT through TfL for emergency active travel schemes in response to the Covid pandemic, as part of the London Streetspace Plan (LSP). The zebra crossing near to Valley Primary School was also installed utilising LSP funding, but also in support of ongoing work to make improvements to Shortlands as part of the Shortlands Friendly Village programme. No casualty threshold was assessed before introducing these schemes.

2. From Jasper Bell to the Portfolio Holder for Environment and Community Services (as Mr Bell was unable to attend the meeting, a written reply was sent.)

How does South Eden Park Road currently "score" from a KSI perspective versus previous years and what thresholds would need to be met in terms of accident levels and severity for road safety improvements to be funded?

Reply:

Bromley prioritises finite spend on casualty reduction schemes based on the number of road casualties occurring at a location over the previous 36 months for which data is available. This is to ensure that the most casualties are saved per pound spent.

The minimum intervention level is set at five or more casualties in a 50m radius. Serious injuries are weighted more heavily in the analysis.

The only location in the vicinity of South Eden Park Road to meet the criteria is the roundabout where South Eden Park Road meets Monks Orchard Road and Links Way; this location is being investigated for a possible road safety improvement.

3. From Irene Bell to the Portfolio Holder for Environment and Community Services

We have reason to believe the casualty reduction budget in the borough has recently decreased despite rises in council tax and obvious risks on local roads. Could the Council confirm whether this is the case and whether this reduction was in line with wider budget reductions and if so in which areas?

Reply:

The funding received from TfL for casualty reduction has not changed in recent years, save for during 2020/21 when no funding was received for casualty reduction. Due to the impact of the pandemic on TfL's income, overall transport funding decreased and at the directive of the DfT, funds were all allocated by TfL to active travel schemes.

4. From Irene Bell the Portfolio Holder for Environment and Community Services

I believe the absence of safe walkways and crossings on South Eden Park Road could be resulting in 'severance' issues and discouraging people from walking in favour of using cars, an issue that could worsen as the new developments adjacent to the road are occupied. Has the Council undertaken any modelling relating to this issue and have 'walking scheme' budgets or funding models similar to those utilised for the 2019 'Hayes Village Scheme' been considered?

Reply:

South Eden Park Road has a number of pedestrian islands to provide safe crossing points. The Council responds to residents and schools' concerns in respect to severance, and this can of course change in respect to developments or changed travel patterns. In the case of schools' requests for improvements to the walking infrastructure, these are normally communicated to the Council as part of a school's School Travel Plan. We encourage all schools to have achieve a silver or gold accreditation for their school travel plan.

The Council's budget for Walking Schemes is currently being utilised to commission counts at various locations along South Eden Park Road. The Council's budget for walking schemes is limited and priorities do and will need to be made.

As Mr Bell was not here I will read for context from one of his answers –

The only location in the vicinity of South Eden Park Road to meet the criteria based on KSIs for interventions is the roundabout where South Eden Park Road meets Monks Orchard Road and Links Way. This location is being investigated for a possible road safety improvement.

5. From Alisa Igoe to the Portfolio Holder for Resources, Commissioning and Contract Management

The Government's Covid Winter Grant Scheme

Table 2 of the following Management Information Returns show the total amount provided to vulnerable households and the administration costs, from Bromley's allocation:

14 February (period 1 December to 31 January)

5 May (period 1 December to 16 April)

Could you kindly provide me with copies of both?

Reply:

Yes, we can certainly provide the tables to you. Just as a point of interest, the administration costs in the first instance were £10,000 and from May the administration costs were £28,141, but the full figures in tabular form will be made available to you.

6. From Alisa Igoe to the Portfolio Holder for Resources, Commissioning and Contract Management

The Council website states the Covid Essential Fund (CEF) is a government initiative, specifically to support households suffering financial hardship as a direct result of the pandemic. There appears to have been no Bromley press release mentioning CEF which started on 17 April and ended 20 June. Why is this and on which date did the Council inform agencies of the opening of the CEF?

Reply:

Funding for the Covid Essential Fund was very limited fund for the extension period as set out above (the grant was previously entitled the Covid Winter Fund). As such the decision was made to continue the arrangements already in place under the Covid Winter fund Scheme for agencies to continue to refer clients on that basis that they were best positioned to assist clients who needed to access this funding. The webpage which had previously been set up to publicise the Bromley Covid Winter Grant was updated to reflect this extension, advising of the continued grant funding and how this could be accessed. The funding was also advertised with partner organisations and agencies across Bromley and those agencies were kept updated advising them of the closing date several weeks in advance.

Supplementary Question:

You say that you told the agencies and partners that you work with, but I am very curious to know why that was not also put out publicly? I have looked at Facebook, Twitter and all of your social media. With the Covid Winter Grant you did tell the public, although not as much as I would liked. I am wondering why you would not advertise this extra fund?

Reply:

It was purely because the grant was very limited, and it was an extension of the grant that was already in existence. We did not feel that it was necessary at that time to try to engender a greater expectation that funds were available that were not available.

We had to live within the means of the grant, and the important thing was to make sure that we targeted the money to the people that needed it rather than broadcast it far and wide. That was the judgement we took.

Council

12th July 2021

Questions from members of the Public for Written Reply

1. From Anthony McPartlan to the Portfolio Holder for Environment and Community Services

Residents have previously been informed that pedestrian road crossings are only considered when people have been either killed or seriously injured in that particular location. This is despite several petitions attracting hundreds of signatures from concerned parents about their family's safety. Can the Council confirm what it takes to get road safety measures implemented in high risk areas before people get hurt?

Reply:

Level of risk is best assessed using historic casualty data. The Council has finite funds to allocate to casualty reduction schemes, so prioritises these funds to where they will save most injuries.

Pedestrian crossings can be used to address a particular pattern of road accidents involving pedestrians, or as part of a wider road safety scheme.

They can also be used simply to make it easier and safer for pedestrians to cross a difficult road, but this needs to be assessed in respect to the number of vehicles and pedestrians using the road throughout the day. These counts and calculations are required to assess whether a crossing is needed and if so what type. The calculations also help the Council prioritise funding to improve the Borough's walking infrastructure, thus providing crossings where the need is greatest.

2. From Anthony McPartlan to the Portfolio Holder for Environment and Community Services

Government data* shows there is no sign of pedestrian and cyclist casualties decreasing in Bromley. Does the Council have a 'Vision Zero' strategy for road safety like Kent County Council and others? If not, why not?

<https://www.gov.uk/government/statistical-data-sets/ras30-reported-casualties-in-road-accidents#casualties-by-type-of-casualty>

Reply:

Bromley has an excellent record of reducing injuries on our roads and aspires to make our roads completely safe for all. Considering the length of the roads in Bromley and the number of miles driven Bromley has achieved one of the lowest casualty rates in London. Bromley's Third Local Implementation Plan 2019 (LIP3) details the continuation of the Council's longstanding approach to target KSIs to reduce the most serious collisions on our roads. That approach includes a range of

targeted infrastructure improvements and behaviour change education programmes, to play its part in achieving a reducing number of all collisions. Our awarding winning young driver education programme reduced collisions in that age bracket which sees a higher-than-average number of collisions. That said, achieving such an ambitious target is not entirely within the Council's control. Changes in car design and driver training also play their part.

3. From John Eveson and Jackie Brewer, Sevenoaks Way Area Neighbourhood Watches, to the Portfolio Holder for Environment and Community Services

What considerations have LBB traffic officers given to effects on Sevenoaks Way traffic (i.e. volumes, emergency services, safety, pollution) due to pending Lidl, Aldi and SGN developments (and increased volumes due to Nugent, McDonalds and Starbucks) - how do they plan to mitigate such effects as video evidence already indicates extensive congestion.

Reply:

The Nugent and McDonalds are existing developments and I do not at present have any information regarding Starbucks or SGN developments. There are proposals for a new Aldi & Lidl on Sevenoaks Way north of the Leeson's Hill junction which officers reviewed. Traffic lights were introduced on the Nugent access and the Sevenoaks / Leeson's Hill junction was reconfigured a couple of years ago to increase capacity. These changes were part of the Council's interventions along the length of the A224 from Orpington High Street to the A20 to improve traffic flow. Since their implementation traffic flow has improved. There were no specific measures included as part of the Aldi and Lidl applications.

Traffic flows fell initially during lockdown but have increased over recent times as people may be reluctant to return to public transport. Traffic levels are high in all parts of the Borough, which I hope will be a temporary phenomenon, but the Council will continue to monitor flows then identify and prioritise any changes required.

4. From Stuart Benefield to the Portfolio Holder for Environment and Community Services

The Council promised to respond formally to the consultation about Green Spaces in June 2021. When can we expect this report?

Reply:

There were a large number of responses to the version for consultation and it is important to consider them and arrive at the right document. A response to the consultation will be made in the autumn 2021 to the Environment and Community Services PDS Committee.

5. From Stuart Benefield to the Portfolio Holder for Environment and Community Services

As the Council's recycling rate has dropped to 47% for the year 2020-21 can the borough still claim to be the "second highest in London" as claimed in a leaflet from Conservative Councillors published in June 2021?

Reply:

In March 2021, the most up to date and audited dataset published by the Department of Food and Rural Affairs confirmed that Bromley Council has the second highest recycling rate in London. We are not complacent and aim to do better.

The recycling rate reporting in the Environment Portfolio Plan is the Council's real time unaudited recycling rate. Central government review and finalise Bromley's waste and recycling data to generate Bromley's official recycling rate. The trend from past years is that, following the review process, the Bromley official recycling rate is a couple of percentages higher than the unaudited recycling rate published in the Environment Portfolio Plan.

The pandemic has seen a significant increase in residual waste and recycling in Bromley with much more home working and with residents spending more time at home. It is likely that all other boroughs will have seen impacts on their waste and recycling, we wait to see the level of impact on recycling rates in other boroughs and therefore how our performance compares.

6. From Suraj Gandechea to the Portfolio Holder for Environment and Community Services

Does the Council monitor the number of private electric car owners there are in the borough? What is the current number and what increase is forecast? What is the current number of electric charging points across the borough and how many are planned?

Reply:

The Council does not monitor BEV (Battery Electric Vehicles) ownership, however DfT data for 2020 suggests that there was 1664 such vehicles owned in the Borough (804 for domestic use and 850 for use as private hire vehicles). Forecasted ownership levels for BEVs are estimated to be between 30000 and 70000 by 2030.

There are currently 42 EV charge points on Highway land and 26+ on land that is publicly accessible. The Council is currently producing an electric vehicle strategy that will inform future plans for publicly accessible charge points in the Borough.

Many residents have installed home charging points. Planning applications for multiple dwellings, in particular, are being given planning conditions requiring the installation of charge points in the parking bays.

7. From Suraj Gandechea to the Portfolio Holder for Environment and Community Services

Has Bromley Council any plans to replace the existing bus shelter for northbound routes 61, 261, 208, 358 etc. at Bromley South Station with an adequate provision for the travelling public and something which properly reflects the importance of this interchange?

Reply:

The Council does not have any responsibilities for providing bus shelters, that being down to TfL. We have, however, contacted TfL to see if they have any plans to replace the current shelter with a higher quality facility. The response is that the shelter was upgraded in 2016 and that no further improvements are planned at this time.

8. From Julie Ireland to the Portfolio Holder for Renewal, Recreation and Housing

What is the current status of the development of the Churchill Quarter (Site G) - the joint venture between Countryside Properties and the London Borough of Bromley. Have the residents in Ethelbert Close - under planning blight for nearly 20 years - been kept informed?

Reply:

The Development Agreement entered into by the Council and Countryside in 2017 requires Countryside to submit a planning application that is deliverable and to this end Countryside have been working with the Council's Planning team to ensure that their scheme is deliverable from both a Planning and viability basis. The Council are considering at a Special Meeting of the Executive on 15 July a series of amendments to the Development Agreement with the outcome being that Countryside will be able to formally seek planning determination of their scheme during the Autumn. It is understood that Countryside are imminently about to launch a Public Information campaign regarding their scheme.

The Council have also appointed a dedicated Officer to liaise with residents whose contact details are provided below:

Martin Barrow, Martin.Barrow@bromley.gov.uk Phone Number: 020 8461 7559

9. From Julie Ireland to the Portfolio Holder for Renewal, Recreation and Housing

The Council is offering grants of £2,000 to one-off home based businesses offered on a "first come first served" basis. How much in total is available in this fund and is this a fair way to allocate the money when the fund has not been well publicised?

Reply:

The value of this fund is £400k. The fund was advertised through the Council website, social media, press releases to local news outlets, the business e-bulletin, and the Business Support Task Force who promoted the scheme to their contacts. In summary, the scheme has been promoted widely and fairly. As of the 30th June we

had received 141 applications and 88 of these had been approved for payment so far.

10. From Rick Das to the Portfolio Holder for Environment and Community Services

Given research showing the popularity of School Streets amongst parents and local residents, is the Council considering any new school streets in the borough and if so where? Will the Council also be renewing existing School Streets given they are created with a validity of up to 18 months?

Reply:

At the current time we do not have local data on the popularity of School Streets with parents, local residents or other road users.

The Council is currently consulting on a trial School Street in Hayes. The outcome of the consultation and any subsequent trial will inform Council policy on School Streets going forward.

A review of the temporary School Streets in conjunction with the schools is underway and a decision on the future of these locations will be made in due course with a report going to a future meeting of the Environment Policy Development and Scrutiny Committee.

11. From Rick Das to the Portfolio Holder for Renewal, Recreation and Housing

The Langley Park development was initially rejected by the Council over traffic concerns, then approved following ambitious active journey targets. As there have been no known attempts to address the already serious issues endangering pedestrians along South Eden Park Road, will the Council now revisit this decision?

Reply:

There is no opportunity for the Council to revisit planning decisions once they have been taken, however if there are specific matters of concern regarding highway safety please write to the Council and we can investigate whether any measures can be taken to address these.

12. From Chloe-Jane Ross to the Portfolio Holder for Environment and Community Services

In Feb/Mar 2021 the Council undertook a consultation on the future of the Albemarle Cycle Scheme. Did the Council send out any consultation letters to households directly, and if so how many letters were sent out and on what roads?

Reply:

As part of London's Cycleways programme the cycle route from Bromley Town Centre to Lower Sydenham was identified as being within the top 10% of routes in London for potential cycle demand. With reports going to the Environment PDS in 2016 and 2018 along with an online consultation in 2018 prior to the committee meeting. However, despite support for the route, previous route options did not proceed due to concerns over the standard of the cycleway.

The inclusion of the section of the Bromley Town Centre to Lower Sydenham cycle route relevant to The Shortlands Friendly Villages Project within the project had the potential to address the reasons for non-progression of the route.

Consultation on Shortlands Friendly Villages scheme (including part of the cycleway) included the distribution of 5,000 flyers to households within the Shortlands scheme area. Note that only the section of Albemarle Road between Bromley Road and Downs Bridge Road is within the Shortlands scheme area.

Prior to the introduction of experimental scheme in Albemarle Road letters were sent to residents in September 2020.

In the consultation exercises in February 2021 and June 2021, letters were sent to 3,000 residents.

Roads delivered to included:

Albemarle Road
The Avenue
Foxgrove Road
Foxgrove Avenue
Canterbury Close
St Georges Road
Bromley Road (between St Georges Road & Albemarle Road)
The Knoll
The Mead
Meadway
Downsbridge Road
The Gardens
Westgate Road
Lankton Close
Glendale Mews
The Heights
Dellfield Close
Springbourne Court
Mayfair Close
Repton Court
Apex Close
Olyffe Drive
Hazelhurst

13. From Chloe-Jane Ross to the Portfolio Holder for Environment and Community Services

Are the Council aware of any problems experienced by the emergency services following the introduction of the Albemarle Road scheme and if not have they sought this information recently?

Reply:

Through both the Experimental Traffic Order and the recommended consultees identified by the TFL guidance on the London Streetspace proposals, consultation was conducted with the emergency services. In February 2021 prior to the changes approved at PDS on the 11th March 2021 the Police made the following comments: "Traffic lights at the junction of Westgate Road, I don't anticipate any issues with that. The one way system on Westgate Road over the bridge can remain, as the narrow bridge was causing a number of minor road rage issues over it. Since it has become one way, the number of near miss collisions has dropped immensely as vehicles did used to approach the bridge at speed".

No responses were received to the consultation in 2021 from the other emergency services. Since the scheme was installed in the autumn of 2020 the police had concerns about vehicles continuing to drive up Albemarle Road and as a consequence physical changes were made to the junction.

14. From David Marshall to the Portfolio Holder for Environment and Community Services

In a recent leaflet, Conservative councillors have claimed that air quality is safe at all schools in the borough. Does Bromley Council agree with this claim given:

- a) the minimal monitoring that exists
- b) WHO believes there is no "safe" level of particulate matter pollution
- c) Bromley Council's own latest data shows NO2 levels on Anerley Hill exceed WHO annual limit and less than 1 km away, on the same road, is Crystal Early Years Centre and James Dixon Primary School.

Reply:

In answer to parts A and B, all monitoring stations within London feed into the LLAQN network and the subsequent model. Based on actual monitoring London wide, a high degree of confidence can be had in the modelled data. Modelling has been widely used for many years and is very useful in predicting future trends. All data is subject to third party accreditation and modelled in accordance with guidance. This includes NOX tubes and real time analysis.

There are many passive monitoring sites in the borough where air quality is measured near to sensitive receptors using NOX tubes. This is added to by the inclusion with the borough of a real time monitor to add further to the Council's ability to monitor air quality.

The data provided by the GLA showed that no primary or secondary schools in Bromley were exposed to NO2 concentration levels that exceeded annual limits.

In the London Environment Strategy 2018, the Mayor committed to meeting World Health Organisation recommended limits for PM2.5 by 2030. As such, Bromley is required to include a focus on PM2.5 in its AQAPs.

Modelled data from the GLA and Defra show Bromley as having some of the lowest levels of PM2.5 in London per weighted population, notwithstanding this, further efforts to reduce levels in Bromley are included in the Air Quality Action Plan.

In answer to C, please can you provide the source of the data so I can provide an answer.

15. From David Marshall to the Portfolio Holder for Environment and Community Services

The Council recently reported that some proposed school streets are not going to proceed. Which schemes are going ahead, which are not, and what are the reasons for abandoning the schemes?

Reply:

One measure considered last year as an emergency response to the Covid pandemic was the use of temporary School Streets. These temporary School Streets were widely offered to schools, but after due consideration only six schools in the Borough chose to take on this approach to managing traffic around their premises within the very short timeframe offered in respect to funding and the commitment required by the schools to operate the school streets. Some schools preferred to have social distancing measures installed, such as widened footways.

A review of the temporary School Streets is underway and a decision on the future of these locations will be made in due course, after discussions with the schools involved. The schools with temporary School Street arrangements in place are: Clare House Primary, Harris Academy Crystal Palace, Harris Primary Orpington, St Mary Cray Academy, Pratts Bottom Primary, Poverest Primary.

The Council is currently consulting on a trial School Street in Hayes. The outcome of the consultation and any subsequent trial will inform Council policy on School Streets going forward.

16. From Sam Webber to the Portfolio Holder for Environment and Community Services

Traffic queuing to enter the Waldo Road recycling centre (tip) continues to be a problem at peak times. What measures are the Council taking to alleviate this problem?

Reply:

When comparing the period August to March, the vehicle numbers visiting the Waldo Road Reuse and Recycling Centre were 9% lower in 2020/21 than they were in 2019/20.

To reduce the traffic impact of the site, we are currently taking the following actions:

- Encouraging residents to look at the webcam that shows the queue to the site before making a decision to visit, with a view to conducting more publicity;
- Considering the use of one new Moving Traffic CCTV camera at the box junction in Homesdale Road;

- Reviewing traffic flow measures at the junction between Waldo Road and Homesdale Road with a traffic engineer;
- Reviewing the webcam that is used at the site and looking into whether there is a way to improve the view of Waldo Road;
- Continuing to provide comprehensive household waste and recycling services including bulky item and garden waste collection services to negate the need for residents to visit Waldo Road on a regular basis;
- Providing garden waste satellite sites during the peak growing season; and,
- Promoting our waste and recycling services through our bi-annual newsletter, Environment Matters, and recycling campaigns.

17. From Gail Hilder to the Portfolio Holder for Environment and Community Services

The Council are now changing the one way system introduced on Albemarle Road. What road use data, if any, persuaded the Council to make this change?

Reply:

Albemarle Road between Westgate Road and Beckenham High Street reverting to two directional traffic was a decision following a recommendation by the Environment and Community Safety PDS Committee on the 11th March 2021. The Committee was provided with the results of the survey of 3,000 local households that showed the majority supported the continuation of the trial with the change in Albemarle Road from West Gate Road to Beckenham Green. It was made in response to concerns about additional traffic outside Harris Primary Academy Beckenham Green and Bromley Road. Traffic data was recorded before the changes were made and further monitoring will be conducted.

18. From Gail Hilder to the Portfolio Holder for Environment and Community Services

What lessons can be learned from the Albemarle Road scheme?

Reply:

The Albemarle Road scheme remains an experimental scheme, a number of observations can be made at this time:

- The Albemarle Road and Bromley Road cycle schemes have been monitored for cyclists using the infrastructure and it is evident that there is a demand for cycling in the Borough.
- The design of the cycle lanes was in accordance with TFL recommended guidance. This use of vertical wands has however caused issues with street cleaning and will be taken into account in regard to best practice in future cycle schemes.
- The scheme was introduced using funding that required installation in a very short period of time and the guidance recognised that public consultation would have to be very limited. Greater public consultation is recognised as vital to keep the local community 'on board' with such schemes.

That public consultation with 3,000 households showed majority support from those responding to continue a modified experimental scheme. Indicating that trialling potentially contentious schemes has value and can have public support, but also avoids the costs and risks of either implementing a permanent scheme which might not achieve its aims or not knowing whether a scheme that may have benefits but also drawbacks might be successful.

19. From Stephen Wells to the Portfolio Holder for Environment and Community Services

Will the Council report back on any projects in the Transport Local Implementation Plan for 2019-2022 that have been successfully delivered? What is their definition of success in each instance?

Reply:

Depending upon the scale of each project, reports will be made to Councillors and made public on the website in respect to the efficacy of schemes. The measure of success will vary from scheme to scheme. For example, a safety scheme will be assessed on whether casualty numbers, especially serious injuries, fall in number over the following years.

20. From Stephen Wells to the Portfolio Holder for Environment and Community Services

The Local Implementation Plan for Transport in Bromley runs from 2019-2022. Given the considerable changes to transport needs brought about by the pandemic, the government's overarching plans to reduce carbon levels in the UK and the increase in people working from home, do the Council have plans to start a full consultation with the public about people's transport needs?

Reply:

The Council will continue to assess locations where transport improvements might be made across the Borough, of whatever type, and public consultation will take place as each proposal is taken forward.

21. From Graeme Casey to the Portfolio Holder for Environment and Community Services

In a recent leaflet, the Conservative councillors claim that Bromley "is the London borough with the cleanest air" - how can they prove that with only one working live air quality monitor?

Reply:

All monitoring stations within London feed into the LLAQN network and the subsequent model. Based on actual monitoring London wide, a high degree of confidence can be had in the modelled data. Modelling has been widely used for many years and is very useful in predicting future trends. All data is subject to third party accreditation and modelled in accordance with guidance. This includes NOX tubes and real time analysis.

There are many passive monitoring sites in the borough where air quality is measured near to sensitive receptors using NOX tubes. This is added to by the inclusion with the borough of a real time monitor to add further to the Council's ability to monitor air quality.

22. From Graeme Casey to the Portfolio Holder for Environment and Community Services

The Council have recently installed a new pedestrian crossing near to Newstead Woods School - what was the KSI figure for the road before the crossing was installed?

Reply:

In the section of Crofton Road between Crofton Lane and Station Road there has been 1 serious collision recorded in the 3 year period up until the end of February 2021.

The parallel zebra crossing in Crofton Road, near to Newstead Avenue, has been installed as part of a TfL funded scheme to improve cycling and walking facilities in the vicinity of Orpington Station. Orpington Station seeing a very high concentration of pedestrians being the location of the second busiest station in the borough plus being in the vicinity of 5 schools, 2 being relevant to this crossing.

23. From Helen Alsworth to the Portfolio Holder for Renewal, Recreation and Housing

When was the decision taken to redeploy the Council's empty houses staff to other duties and for what reason? Why were the public not informed? How long will it take to deal with the backlog of empty homes work and how big is the backlog?

Reply:

The Empty Homes staff have not been redeployed to other duties. The role is currently vacant. The Job Description is being revised prior to recruitment. There is no backlog as other officers in the Housing Improvement Team have dealt with ongoing queries and necessary actions.

24. From Helen Alsworth to the Portfolio Holder for Renewal, Recreation and Housing

How does the Council finance its work on empty homes? Are there any grants available from central government for this type of work?

Reply:

Funding was available 2011-2015 via the Empty Homes Programme. Central Government has not made similar funding available since that programme ended. However some of the statutory measures open to the Council can be financed by placing a charge on the property so that the money can be recouped at a later stage. It is also worth noting that funding does come to the Council from the New Homes Bonus once a property is brought back into use.

This page is left intentionally blank

Council

12th July 2021

Questions from Members of the Council for Oral Reply

1. From Cllr Angela Wilkins to the Leader of the Council

You have stated more than once that “Yes, there are needs in this Borough, but they are all met by this Council.” Do you stand by that statement?

Reply:

I stand by fact that Bromley Council will always fulfil its statutory duties in full. Also, that it will always be there to provide help and assistance to those in need for whom it holds a responsibility to do so.

Supplementary Question:

Does that really mean that the wording of your mission statement is slightly inaccurate and misleading?

Reply:

No, it does not.

2. From Cllr Kathy Bance MBE to the Portfolio Holder for Adult Care & Heath

Can you give an update on the services offered from the Kentwood Centre for Adults with Learning Difficulties?

Reply:

The Kentwood Centre now forms part of the Council’s new service offer for people with a learning disability. Other centres, with activities, are now available at -

- Regency Court,
- Cotmandene
- Norman Park Lodge (Bromley Mencap)
- West Wickham Methodist Church (Bromley Mencap)
- The Shaw Trust (Scadbury Park)
- Jubilee Day Centre (Choice Support), Beckenham
- ‘Livability’ Nash College in Coney Hall

There is a new focus on residents choosing the activities they want and providers developing activities that will be popular. Developing life skills and access to employment are key parts of this offer.

Government Covid restrictions meant that day centres had to be closed during the pandemic lockdown. As part of the Council’s recommissioning of learning disability day schemes, the Kentwood Centre reopened on 14 June with Millsted Care now running services out of the centre.

Millsted Care’s sessions include:

- Cooking skills

- Dance & movement
- Digital technology skills
- Exercise
- Sensory – hand & foot massages, foot spas and guided relaxation
- Group discussions to help problem solving and self-advocacy
- Acting and music
- Learning Makaton
- Retirement age focussed sessions such as tea dances

Supplementary Question:

Can you email me that list of services at Kentwood so that we can make more use of them in our ward?

These services were already in difficulty before corona because of a lack of adequate funding. Will this Council be increasing the funding and/or services to support this vulnerable group of people?

Reply:

Bromley Mencap has a very comprehensive catalogue/brochure of events that are going on for people with learning disabilities across the whole of the borough. I would refer Members to that particular document which is on the Bromley Mencap website with details of all the activities available at the different schemes. It is really good because it gives details of how to get to there by bus, or the parking arrangements.

From the point of view of funding, this is a service-user led activity programme, so we will be looking at the eligible needs of service users, and no-one will be precluded from joining any of the activities if they are eligible.

3. From Cllr Ian Dunn to the Portfolio Holder for Adult Care & Health

What staffing shortages have been experienced in your Portfolio since the beginning of 2021? Please include both directly employed staff and contractors.

Reply:

The Director of Adult Social Care has advised that the Council and its contractors have experienced no adult care staff shortages since the beginning of the year that have impacted on the ability to maintain service levels.

Supplementary Question:

In that case, can you explain why in the Provisional Final Accounts later on in this agenda there are references to underspends in staffing budgets and vacancies, and what the impact of these were?

Reply:

I would need to see the actual detail that you are referring to so that I can make an informed decision and consult about it.

4. From Cllr Ryan Thomson to the Portfolio Holder for Environment and Community Services

Please explain the rationale for the selection of sites for air quality monitoring and the removal of equipment from others across the borough?

Reply:

When selecting sites for air quality monitoring, including the addition or removal of sites, Bromley adheres to the requirements within the London Local Air Quality Management Policy -

https://www.london.gov.uk/sites/default/files/llaqm_policy_guidance_2019.pdf

Supplementary Question:

Can air quality monitoring equipment be re-installed across Crystal Palace ward – the exact locations would be determined with the support of officers, but I am keen for such a key metric for gauging public health and wellbeing to be returned to the ward, and I do feel that, provided they are properly located, they will serve a dual benefit of providing a reliable baseline for air quality should Croydon Council's proposed ANPR scheme go forward.

Reply:

I do not feel that is necessary at the current time. As you will see from some of the written questions, that considering we have some of the cleanest air in London, the reviewing of our policy has shown that our monitoring points completed with modelling shows that we are very accurate in our measurements of air quality across the borough and therefore we can concentrate more on modelling the data rather than additional sampling points.

5. From Cllr Josh King to the Portfolio Holder for Environment and Community Services

What actions did the Council take to mark Clean Air Day on 17th June?

Reply:

The Council is not in the business of marking a single day on such an important topic but instead firmly focusses on delivering continuing improvements in air quality which has been achieved every year since 2010. Bromley has a very good record here and meets all national air quality objectives for particulate matter and all the national air quality objectives for hourly and 24 hour concentrations, but there is always more to do as our Air Quality Action Plan outlines. This plan, which is published on our website, will be reviewed later this year, in line with our commitment, where I am hopeful of seeing progress, including by TfL, where we continue to call for electric buses, which will help tackle pollution, not just on TfL roads, which are the most polluted in the Borough.

Supplementary Question:

Do you not accept that days such as this can help promote the topic of clean air and by not doing anything residents may perceive that it is not the Council's priority?

Reply:

I do not agree with that at all. Obviously, many groups may choose to do outreach or other actions. There is a huge amount of other publicity for various days throughout the year, any of which would look to achieve beneficial outcomes for this borough and to select one day, considering how many action days there are, I do not think is beneficial as opposed to year-round improvement in performance.

6. From Cllr Kevin Brooks to the Portfolio Holder for Adult Care & Health

Will the Portfolio Holder please give an update on the current effectiveness of Respite Services in Bromley?

Reply:

Effective respite services in Bromley remain responsive to both service users and their carers whenever possible.

Council funded planned respite services began reopening in May and are now scaling up. With the lifting of lockdown restrictions now confirmed a complete, comprehensive and effective service offer will shortly be restored.

Supplementary Question:

Having spoken to the manager they say the waiting list is ten to twelve weeks. Mycare themselves say that when it comes to them a minimum of four weeks, and this is just for three hours of respite per week. Will the Portfolio Holder agree that, especially with the encouragement for more elderly residents to receive care from home, a faster, more funded service is needed to ensure that those needing respite receive it in a timely manner?

Reply:

I think we need to pay homage to the officers who are working really hard at the moment to build up and build better our respite for people within Bromley. This is not only, as I have alluded to with regard to the learning disability cohort of people that I mentioned in the question from Councillor Bance, but also for our older people. We are looking at a more community based offer, a different model, and there will be a paper coming to the PDS probably in the autumn to identify what the new model of care may look like.

7. From Cllr Vanessa Allen to the Portfolio Holder for Renewal, Recreation & Housing (answered by the Leader)

Where in this Council's Constitution and other procedures does it say that a councillor can call in a planning application to a specific planning committee?

Reply:

There is no provision for a Councillor to 'call in' an application to a specific planning committee, however the Chairman of Development Control Committee does decide, in discussion with officers, which cases are to be considered at Development Control Committee as opposed to Plans Sub Committee. This procedure is set out in the Local Planning Protocol which forms part of the Council's Constitution.

8. From Cllr Nicholas Bennett MA JP to the Portfolio Holder for Renewal, Recreation and Housing (answered by the Leader)

What is the estimated cost of the repairs to the West Wickham Leisure Centre and what is the latest estimate for the replacement of the Centre by a new facility?

Reply:

With regard to the estimated cost of repairs, this information is not quite yet available. Condition surveys have been instructed and are in progress across all operational Council property. Draft reports that will include West Wickham Leisure Centre are scheduled for receipt by 14th July at which point costs can be determined with some accuracy. On behalf of Councillor Morgan, I will ensure that this information is passed to Councillor Bennett.

9. From Cllr Simon Jeal to the Portfolio Holder for Children, Education and Families

What definition does the Council use to define poverty and based upon this definition, how many children are growing up in poverty within the borough of Bromley?

Reply:

Poverty is an emotive word, so areas of deprivation is widely used by us in Bromley. I am also not sure that many of our residents would welcome being identified as living in poverty either.

Free School Meals eligibility is most commonly used to identify a level of deprivation. As of January 2021, 7170 children within Bromley maintained schools were eligible for Free School Meals, which is 14%.

Supplementary Question:

What does she regard as the Council's responsibility with regards to reducing poverty or deprivation if that is the term that would be preferred within Bromley?

Reply:

The Council's responsibility is to offer support to any child in need and we will offer them support either to the family or the child through our early intervention service or referral to children's social care if the threshold is met, where we could help or signpost them to the voluntary sector, and holistic offers are available through our early intervention services and support is also offered through Children's Centres.

Additional supplementary question:

Councillor Angela Wilkins asked a further question to ask for clarification, as the question was what was the Portfolio Holder doing to reduce poverty, and this was not the answer given – the answer mentioned the services that the Council provided, which were not related to poverty.

Reply:

I have already commented that we do not refer to the word poverty in Bromley, it is to do with areas of deprivation. We have a statutory duty to give help to those children if they are in need. I do not know what more I can add to that.

10. From Cllr Angela Wilkins to the Portfolio Holder for Resources, Commissioning and Contract Management

When did the Council last receive value for money certificates from our external auditors?

Reply:

The Council last received a Value for Money Conclusion from its external auditor for the year ended 31st March 2018. The external auditor has stated that it is unable to issue a value for money for the years ended 31st March 2019 and 2020 until it has completed the work necessary on an objection to the accounts.

Supplementary Question:

Is he able to give a brief synopsis of the reasons why those certificates have not been issued for those years?

Reply:

There are two fundamental answers to that. The first one is because there is a very detailed and lengthy objection that has been lodged to the accounts. There is nothing unusual in that and it takes a long time to go through a very long objection like that. That is being worked on as we speak. The second element is an interesting one and it is partly because of the change of auditors. When we had KPMJ up until last year they had provided a certificate before they had actually finalised the answers to all the objections. When EY were appointed they took a different view. It does not make us unusual amongst the Councils that EY are auditing - they are holding back on value for money certification pending any formal objections that may have been lodged. That is why there is a delay.

11. From Cllr Kathy Bance MBE to the Portfolio Holder for Resources, Commissioning and Contract Management

How much is it costing to have a man sleeping in a van in the car park so that if there is a power cut, he can turn the generators on?

Reply:

The costs submitted by Amey and including all fees are in the order of £7,200 per month. This is in place to ensure uninterrupted power to the data centre and to the NHS facility. Site investigations to confirm the extent of the works required to the UPS and switchgear have been completed and the final specification will be agreed between the consultant, IT and BT. The date to complete the works, including allowing for complete electrical shutdown, will be confirmed very soon.

Supplementary Question:

Who decided it was appropriate to have a lone person sleeping in a van in the Civic Centre car park and did you, the Portfolio Holder, support that decision?

Reply:

Did I as Portfolio Holder - no, I did not. Was I informed it was happening – yes, I was. I would expect the people running this site to run it in a safe way. If it is their judgement, which it was, to have 24/7 cover in order that we can continue our work within the health service as well as within the Council then I support that judgement as being absolutely correct. It is not a long-term solution, it is a short-term fix. We will now have a long-term solution probably in a month or two's time. But certainly, the priority was to keep the health people supplied and to keep the Council going and that is what we are doing. The idea that that we have a man sleeping in a van is a rather quaint notion and perhaps a follow-up to an Alan Bennett story. What it is about is that we give 24/7 cover during the course of the day when the Civic Centre is open and that individual has access to the facilities of the Civic Centre. At night-time we have to have someone on site just in case things go wrong – that is why he is there, and I have no problem with that at all.

Additional supplementary Question:

Councillor Simon Jeal asked that, as the cost was £7,200 per month, how many months had this arrangement been in place for?

Reply:

The arrangement has been for about nine or ten months.

Additional supplementary Question:

Councillor Nicholas Bennett asked why the empty property at the entrance to the Council car park, rather than asking someone to sit in a van?

Reply:

I understand the question, but the answer eludes me.

The Leader asked whether Councillor Bennett was referring to the zed-pod in the car park. It was clarified that the building in question was at the Rochester Avenue entrance, and the Leader offered to provide further information to Councillor Bennett.

Additional supplementary Question:

Councillor Simon Fawthrop commented that UPSs were easy to source, and asked why it had taken ten months to get a quote when he could probably get three quotes tomorrow?

Reply:

It has not taken anything like that time to get a quote. The problem is that you have to shut down the system entirely. That is the problem, and we cannot do that currently as the health service are using it on a daily basis. When we can shut it down, probably in a month or two's time, we will shut it down. But it was not to obtain a quote. A full report on this has gone to the Audit Sub-Committee so I know that Councillors who have been asking these questions would have been informed that this was the case. The discussion at the last Audit Sub-Committee centred particularly around whether something should be taken in part two or part one, and the decision was that it be taken in part two. I will not make any reference to anything that appeared in that paper.

(At this point the time allowed for questions expired - the remaining questions received written replies).

12. From Cllr Ian Dunn to the Leader of the Council

Building a Better Bromley was not on the agenda for the June Executive Meeting, in spite it being on the Forward Plan for decision at this meeting. When will this document come to Members for decision?

Reply:

Although it is clearly not for me to dictate their agenda, I understand that it is earmarked to be considered at the September Executive, Resources and Contracts PDS Committee meeting.

13. From Cllr Josh King to the Leader of the Council

Is it acceptable for Members of this Council, particularly Members of the Executive, to use private e-mails for Council Business?

Reply:

Yes, of course it is acceptable. If it wasn't acceptable, the practice wouldn't be permitted.

In the words of the Council's Chief Legal Officer:

"Bromley.gov email addresses are provided for member convenience. Because of the way we work and make decisions there isn't a practical difference between a Member using a private address as long as sound data protection practices are followed."

14. From Cllr Nicholas Bennett MA JP to the Portfolio Holder for Environment and Community Services

If he will list the locations where -

- i. the Council
- ii. TfL

have narrowed the roadway to create 'safe spaces' for pedestrians and if he will indicate which ones will be removed once the current Covid-19 restrictions are lifted on July 19th.

Reply:

During the pandemic, in order to create social distancing space to accommodate queues, the passage of large numbers of pedestrians (in places such as town centres and outside schools), or to facilitate outside dining on footways, the Council narrowed the carriageway in the following locations:

1. Penge High Street
2. Beckenham High Street
3. Bromley High Street and East Street
4. Orpington High Street
5. Langley Schools (Hawksbrook Lane)
6. Crofton Infant School (Towncourt Lane)
7. Perry Hall Primary School (Perry Hall Road)
8. Marian Vian Primary School (Shirley Crescent)
9. Farnborough Primary School (Farnborough Hill)
10. Wickham Common Primary School (Gates Green Road)

In a number of these locations the social distancing measures have already been reduced. The barriers in Penge High Street have been completely removed. In locations where the barriers (attractive planters) are in place to support local businesses and outside dining areas, these are likely to remain in place until the Autumn, in line with their pavement licenses. This will be the subject of ongoing review. Most of the other barriers that remain will be considered for removal in the coming months after the 19th of July, depending on the consultation with the schools or BIDS in question.

TfL installed various social distancing measures in West Wickham High Street which has been reviewed and are now being removed. None of these were in support of outside dining.

15. From Cllr Simon Jeal to the Portfolio Holder for Children, Education and Families

How does the department plan to make use of the recently issued Youth Endowment Fund toolkit?

Reply:

The toolkit was only launched on 28th June, but we intend to use it locally to identify activities and target our resources in a way that makes a difference to children's lives. Our local approach is focused on diversion and prevention of offending and we would want to use this toolkit to improve our offer to children in the borough

alongside the knowledge and intelligence that we already have in the borough and beyond.

Council

12th July 2021

Questions from Members of the Council for Written Reply

1. From Cllr Angela Wilkins to the Portfolio Holder for Children, Education & Families

Please provide details of Holiday Activity & Food grant income and expenditure to date. Please also provide the criteria used for determination of these Holiday Activity & Family grant awards.

Reply:

Bromley has been allocated up to £808k from the DfE to run the Holiday Activities and Food programme for Easter, Summer and Christmas 2021. Actual grant draw down from DfE is subject to activity providers meeting the restrictive grant requirements for eligible provision and is likely to be lower.

Expenditure to date:

During Easter, the national restrictions due to the coronavirus pandemic and late notification of the grant conditions impacted on planned provision. A programme of activities ran at four youth hubs in the borough, with specific activities for our children looked after.

For Easter, the total spend was £27,278.

Our estimated spend for the summer is anticipated to be c£300k. The extension of the Covid Local Support Grant may impact on take up of activities.

Bidding process & timelines:

- Expression of interest process widely publicised on Bromley council website and school circular
- The team wrote directly to organisations that had enquired about the HAF programme
- Evaluations took place w/c 7th June and included an evaluation panel scoring process with colleagues from Education, SEN, Procurement, Public Health & Commissioning

Criteria used for determination of HAF grant awards:

- Legal compliance (safeguarding, health and safety, food standards, etc)
- 4/4/4 rule of provision (at least 4 weeks, 4 hours per day, for 4 days a week)
- Estimated cost per head
- Daily capacity numbers & ability to upscale
- Booking system & venue.

2. From Cllr Angela Wilkins to the Portfolio Holder for Public Protection and Enforcement

Please provide a breakdown of the duties of the Council's Ward Security operation, including their responsibilities, powers and duties, the hours worked and how their time is allocated across the Borough.

Reply:

Ward Security are a sub-contractor to Veolia as part of the Street Environment Contract. Their role is to ensure the Council provides a safe environment for visitors to its parks and open spaces, through a programme of patrols and enforcement measures. Ward Security investigate, resolve and take action against offences in the public realm, this can include littering offences, unlawful encampments and Fly-tipping. Acting on behalf of the Council Ward Security have the powers to enforce against Bye Laws and Public Spaces Protection Orders.

A routine programme of patrols inclusive of Mobile Dog Handler and Security Personnel is agreed with the Council to ensure there is a reactive patrol service, all Parks, Open spaces, Countryside sites and Public Highway safe and secure, and seasonal variations is considered.

The Borough is split into four patrolling areas to ensure coverage of all parks and open spaces across the Service. Those four patrol shifts vary depending on daylight hours (e.g. 1330-2300hrs presently phasing incrementally each month to 1100-1900hrs during winter) and other service exigencies (e.g. Bonfire/Fireworks Night).

3. From Cllr Ian Dunn to the Portfolio Holder for Resources, Commissioning & Contract Management

Please provide a table showing the total value of the Council's Earmarked Reserves at the 31 March in each of the years 2015 to 2021.

Reply:

Financial Year-ending	Total Value of Earmarked Reserves (£k)
31/3/15	111,061
31/3/16	101,696
31/3/17	102,496
31/3/18	125,997
31/3/19	149,606
31/3/20*	167,525
31/3/21*	269,753 **

*These are draft figures and subject to external audit

** This balance includes £63,407k which the Council was required to account for as a Reserve, but where equivalent spend will be incurred during 2021/22. A further £2,662k represents a grant received during 2020/21 that will be used to fund costs that will accrue during 2022/23. It is also important to recognise that, similar to many other authorities the set aside reserves have increased to partly address the future impact of the 'new normal' for 2021/22 and future years – the Government has not provided any guarantee of additional funding from 2022/23 to deal with the impact of the 'new normal'.

4. From Cllr Ian Dunn to the Portfolio Holder for Resources, Commissioning & Contract Management

What checks are made on contractors (during the contract term) in relation to health & safety compliance and whether employee's terms and conditions of employment are being upheld?

Reply:

The approach to contract management will vary depending on a number of factors: the nature of the contract and the service it is delivering; the value and risk of the contract; the requirements of the specification; and the capacity and resource of the client team who have ownership of the contract.

For example, for contracts within the Environment and Public Protection Department, as well as the general contractual requirement on all providers to record and inform the Council of any issues arising, Health and Safety is a standing agenda item for all contract meetings with providers, with statistics and any significant issues raised at both Departmental and Corporate Health and Safety Boards. Health and Safety forms part of the contract monitoring checklist for works or site visits made by Contract Managers which includes considering both the operational arrangements visibly in place as well as the conduct of staff.

Similarly, the Performance Monitoring Team in the People Department also include a detailed Health and Safety checklist when conducting monitoring visits to registered care settings, as well reviewing Health and Safety arrangements through monitoring visits and provider meetings as part of their Quality Assurance Framework. In addition, they also undertake sample checks on employee files to ensure that appropriate recruitment procedures are in place as well as staff supervision and training.

5. From Cllr Vanessa Allen to the Portfolio Holder for Renewal, Recreation & Housing

Please provide the following information in relation to planning applications called in for decision at committee since the beginning of 2021:-

- Ward
- Application reference number
- Officer's Recommendation
- Committee Decision

- Name of Councillor activating call in.

Reply:

Attached is a table of all cases determined or scheduled for committee in 2021 subject to call in with the detail requested ([Appendix 1.](#))

6. From Cllr Simon Jeal to the Portfolio Holder for Children, Education & Families

Please provide the number of new referrals to Children's Services from 2018 to present, broken down by ward. Please provide the number of child safeguarding referrals for the same period, also broken down by ward.

Reply:

Please see two tables below, the first showing the number of all contacts made to Social Care through the MASH and the second table for actual referrals to Social Care for the reporting years (April to March) 2018/19 to date.

For both tables, the number referred to is the actual number of contacts and referrals, not the number of children, so will potentially include multiple instances for a child. The tables include all contacts/referrals in the reporting years, and it is possible some children may have had previous instances of a contact or referral, so may not technically be 'new' to social care in that sense.

Please note that due to reporting constraints, there is not a direct correlation between the contacts and the referrals, for example, some referrals will commence via another route rather than coming through the MASH.

Contacts by Ward	2018/19	2019/20	2020/21	Apr 21 to date	Grand total
Bickley	176	250	262	103	791
Biggin Hill	186	241	275	76	778
Bromley Common and Keston	461	524	624	147	1756
Bromley Town	366	433	497	133	1429
Chelsfield and Pratts Bottom	203	239	258	73	773
Chislehurst	197	261	297	88	843
Clock House	286	310	369	93	1058
Copers Cope	252	245	306	111	914
Cray Valley East	706	850	958	285	2799
Cray Valley West	823	915	1070	231	3039
Crystal Palace	392	441	571	168	1572
Darwin	49	95	158	28	330
Farnborough and Crofton	240	326	303	82	951
Hayes and Coney Hall	224	230	322	88	864
Kelsey and Eden Park	256	322	292	89	959
Mottingham and Chislehurst North	571	651	743	193	2158
Orpington	523	581	612	157	1873

Penge and Cator	615	645	769	176	2205
Petts Wood and Knoll	131	157	201	55	544
Plaistow and Sundridge	392	428	571	159	1550
Shortlands	127	152	155	45	479
West Wickham	139	179	216	71	605
Other LA	62	79	89	38	268
Unknown	286	306	359	138	1089
Total	7663	8860	10277	2827	

Referrals by Ward	2018/19	2019/20	2020/21	Apr 21 to date	Grand total
Bickley	51	102	100	52	305
Biggin Hill	73	74	96	19	262
Bromley Common and Keston	174	224	195	50	643
Bromley Town	139	171	147	54	511
Chelsfield and Pratts Bottom	120	131	105	21	377
Chislehurst	68	103	94	33	298
Clock House	102	125	100	39	366
Copers Cope	98	106	110	46	360
Cray Valley East	274	340	371	95	1080
Cray Valley West	358	378	394	89	1219
Crystal Palace	122	174	185	60	541
Darwin	10	46	72	8	136
Farnborough and Crofton	95	133	95	25	348
Hayes and Coney Hall	85	115	131	37	368
Kelsey and Eden Park	108	129	104	25	366
Mottingham and Chislehurst North	241	264	271	74	850
Orpington	224	257	230	48	759
Penge and Cator	209	246	300	58	813
Petts Wood and Knoll	44	72	78	17	211
Plaistow and Sundridge	127	181	152	62	522
Shortlands	65	63	53	13	194
West Wickham	74	73	68	23	238
Other LA	189	123	120	22	454
Unknown	323	269	218	27	837
Total	3373	3899	3789	997	

7. From Cllr Simon Jeal to the Portfolio Holder for Children, Education & Families

Have LBB completed and returned the National Youth Sector Census? If so, please share a copy with members, and if not, please explain why not.

Reply:

I can confirm that the census was returned with the timescales required. A copy is not retained as once the forms are completed and you press send it goes back to the central address/requester.

8. From Cllr Nicholas Bennett MA JP to the Portfolio Holder for Renewal, Recreation and Housing

If he give the following information on families currently in temporary accommodation following application as homeless –

- i top five reasons for application
- ii previous accommodation – rental, owned, living with relatives/friends;
- iii average age of main applicant;
- iv number of single persons;
- v number single with children;
- vi number with partner but no children;
- vii number with partner and children;
- viii total number of children housed

Number whose previous place of residence was -

- i L.B.Bromley;
- ii other London Borough;
- iii England;
- iv rest of UK;
- v overseas.

Reply:

The information requested is set out in the attached spreadsheet ([Appendix 2.](#))

9. From Cllr Nicholas Bennett MA JP to the Portfolio Holder for Renewal, Recreation and Housing

If he will set out in table format the following information regarding the temporary accommodation for homeless families.

i Location: Number placed in accommodation in -

- L.B.Bromley;
- other London borough,
- Kent (including Medway Unity Authority);
- other neighbouring counties and districts to Greater London,
- rest of England,
- Scotland,

- Wales,
- Northern Ireland
- overseas.

ii Accommodation:

- L.B. Bromley,
- housing association,
- private sector,
- bed and breakfast
- other.

iii Weekly cost by number of bedrooms.

Reply:

The information requested is set out in the attached spreadsheet (Appendix 2.)

This page is left intentionally blank

Application No	Address	Description	Ward	Call In	Decision Issue Date	Decision		Recommend. Accepted or Overturned
19/04375/F ULL1	Biggin Hill Airport Ltd Churchill Way Biggin Hill TN16 3BN	Fenced Noise Monitor Compound located at the northern end of the runway RETROSPECTIVE APPLICATION	Biggin Hill	Cllr Scoates	02.02.2021	PER	PSC	A - Accepted
19/04588/F ULL1	70 High Street Bromley BR1 1EG	Demolition of existing buildings (No.66 to 70 High Street), construction of 12 storeys to provide 256.4 square metres retail floorspace on the ground floor and 47 residential units above with associated disabled car parking spaces, cycle parking and refuse storage area.	Bromley Town	Cllr Michael Rutherford	26.04.2021	REF	DCC	O - Overturned
20/01718/F ULL1	Selwood House Kemnal Road Chislehurst BR7 6LT	Erection of two storey rear extension to provide one additional two bedroom duplex flat with own entrance (accessed from Pickwick Way) and to enlarge four existing flats providing them with a new exclusive entrance (access from Kemnal Road); along with minor external and internal alterations to existing building to form an additional one bedroom flat within the existing building (flat 14) in place of former communal lounge and kitchen. Use of existing highway access off Pickwick Way for additional parking (including EV charging) and additional refuse/recycling and cycle storage.	Chislehurst	Cllr Sharma.	11.05.2021	PER	PSC	O - Overturned
20/02238/F ULL1	Eden Park Service Station Links Way Beckenham BR3 3DG	Installation of 1no. jet wash bay involving installation of silt trap and associated drainage, erection of 2.6m high glass screens and installation of 1no. new 5m high pole mounted floodlight	Kelsey And Eden Park	Cllr Christine Harris	30.06.2021	REF	PSC	O - Overturned
20/02367/F ULL1	9 Copse Avenue West Wickham BR4 9NL	Demolition of existing bungalow and construction of 2 x 3 bedroom semi-detached properties with cycle and bin storage, paved driveways, steps leading down to each rear garden. Covered pathway with roof to side of Plot 9 with new brick wall (adjacent to No. 33 Boleyn Gardens). Existing vehicular crossover widened to Plot 9a and erection of carport with mansard roof to the side of new property, new brick wall (adjacent to No. 11 Copse Avenue).	West Wickham	Cllr Brock	22.02.2021	REF	PSC	O - Overturned

Application No	Address	Description	Ward	Call In	Decision Issue Date	Decision		Recommend. Accepted or Overturned
20/02598/F ULL6	59 Manor Way Beckenham BR3 3LN	Construction of 2 summerhouses to rear garden and replacement fence	Kelsey And Eden Park	Cllr Dean	16.02.2021	REF	PSC	O - Overturned
20/03691/F ULL6	7 Manor Place Chislehurst BR7 5QH	Demolition of conservatory. Erection of part single storey/part two storey/part first floor side, rear and front extensions, re-pitched and raised roof to form first floor and roof accommodation, integral garage and elevational alterations.	Chislehurst	Cllr Sharma	02.02.2021	REF	PSC	A - Accepted
20/03819/F ULL6	11 Kennedy Close Petts Wood Orpington BR5 1HP	Conversion of garage to habitable room to include alterations to the roof and erection of replacement single storey side and rear extension (part retrospective)	Petts Wood And Knoll	Cllr Fawthrop	09.03.2021	REF	PSC	O - Overturned
20/03924/F ULL6	49 Birchwood Road Petts Wood Orpington BR5 1NX	Proposed single storey side/rear extension forming a new store room/covered barbeque area and installation of 2no. new bi-folding doors to the rear elevation.	Petts Wood And Knoll	Cllr Tony Owen	16.02.2021	PER	PSC	A - Accepted
20/04071/F ULL6	10 Silverdale Road Petts Wood Orpington BR5 1NJ	Demolition of existing garage and construction of a single storey side/rear extension and part front garage extension with new pitched roof to form front porch canopy. Alterations to existing patio with new access steps and retaining wall	Petts Wood And Knoll	Cllr Fawthrop			PSC	

Application No	Address	Description	Ward	Call In	Decision Issue Date	Decision		Recommend. Accepted or Overturned
20/04094/F ULL6	Cameron Mead Road Chislehurst BR7 6AD	Summerhouse enclosure to the rear	Chislehurst	Cllr Boughey	02.06.2021	PER	PSC	A - Accepted
20/04217/F ULL6	128 Jackson Road Bromley BR2 8NX	Conversion of existing side garage into habitable accommodation, construction of a single storey glazed link between the house and garage, side roof dormer, elevational alterations including new windows, construction of front porch and renewal of roof coverings. (Revised scheme to approved application DC/20/01687/FULL6 to allow for new main house roof)	Bromley Common And Keston	Cllr Alexa Michael	02.02.2021	REF	PSC	O - Overturned
20/04321/F ULL6	1 Oldfield Close Bickley Bromley BR1 2LL	Alterations to planning application reference: 19/03722/FULL6 to include obscure glazed windows to the first floor flank elevation, alterations to rear doors on rear facade, alterations to brick detailing and render. Addition of front porch and single storey rear extension. Velux Windows at roof level	Bickley	Cllr Smith	27.04.2021	PER	PSC	A - Accepted
20/03968/F ULL6	Woodside Barnet Wood Road Hayes Bromley BR2 8HJ	Convert garage into habitable room. Construct disabled ramp to rear and enclosure of existing rear porch	Bromley Common And Keston	Cllr Alexa Michael	16.02.2021	PER	PSC	A - Accepted
20/04509/A DV	Land At Springvale Retail Park Sevenoaks Way Orpington	Signage for the drive thru coffee shop to comprise five internally illuminated fascia signs, two non illuminated freestanding directional signs, one non illuminated clearance bar, two internally illuminated digital static menu boards signs (one single and one triple digital screens), one non illuminated speaker canopy and two vinyls to windows	Cray Valley East	Cllr Yvonne Bear	17.06.2021	CONSENT	PSC	A - Accepted

Application No	Address	Description	Ward	Call In	Decision Issue Date	Decision		Recommend. Accepted or Overturned
20/04607/F ULL6	150 Kingsway Petts Wood Orpington BR5 1PU	Demolition of existing conservatory and replacement with a two storey front/side extension and single storey side/rear extension and elevational alterations.	Petts Wood And Knoll	Cllr Keith Onslow Cllr Owen	15.04.2021	CONTEST APPEAL	PSC	O - Overturned
20/04609/F ULL6	77 Lynwood Grove Orpington BR6 0BQ	Addition of a barn hip and 2 Velux windows to existing roof. RETROSPECTIVE APPLICATION	Petts Wood And Knoll	Cllr Fawthrop	22.02.2021	PER	PSC	A - Accepted
20/04648/P LUD	Flat 3 20 Orchard Road Bromley BR1 2PS	The proposed change of use of flat (use class C3) to HMO (use class C4) for 3 - 5 persons and minor internal works. LAWFUL DEVELOPMENT CERTIFICATE (PROPOSED)	Bickley	Cllr Kira Gabbert	15.04.2021	PER	PSC	A - Accepted
20/04458/T PO	188 Wickham Way Beckenham BR3 3AS	T1 Swedish Whitebeam in front garden - Fell. SUBJECT TO TPO 1702 (28.7.2000)	Shortlands		09.03.2021	CONSENT	PSC	A - Accepted
20/04944/F ULL1	21 Windsor Drive Orpington BR6 6EY	Part one/two storey rear extension to provide enlarged restaurant space on ground floor, and staff live/work accommodation on first floor with ventilation ducting.	Chelsfield And Pratts Bottom	Cllr Mike Botting			PSC	

Application No	Address	Description	Ward	Call In	Decision Issue Date	Decision		Recommend. Accepted or Overturned
20/05062/F ULL1	94 Towncourt Lane Petts Wood Orpington BR5 1EJ	Erection of a two storey detached dwelling and a pair of semi-detached houses.	Petts Wood And Knoll	Cllr Fawthrop	15.04.2021	PER	PSC	A - Accepted
20/05155/F ULL6	63 Kingsway Petts Wood Orpington BR5 1PN	Erection of part single storey/part two storey side and rear extensions in connection with loft conversion. (Amended plans).	Petts Wood And Knoll	Cllr Fawthrop	02.06.2021	REF	PSC	A - Accepted
20/05176/F ULL1	33 Croydon Road Penge London SE20 7TJ	Part one/two storey rear extensions and rear dormer extension associated with use of the site as a children's day nursery.	Penge And Cator	Cllr Jeal			PSC	
21/00140/F ULL6	4 Maple Close Petts Wood Orpington BR5 1LP	First floor extension to existing single storey side and rear extension	Petts Wood And Knoll	Cllr Fawthrop	19.05.2021	PER	PSC	A - Accepted
21/00271/F ULL6	42 Bucknall Way Beckenham BR3 3XN	Loft conversion incorporating dormers to the rear and front and rooflights to the sides, enlargement of the rear ground floor bay window and partial conversion of the garage	Kelsey And Eden Park	Cllr Dean	02.06.2021	PER	PSC	A - Accepted

Application No	Address	Description	Ward	Call In	Decision Issue Date	Decision		Recommend. Accepted or Overturned
21/00372/F ULL6	14 Silverdale Road Petts Wood Orpington BR5 1NJ	Loft conversion with a half gable, rear dormer and front rooflights.	Petts Wood And Knoll	Cllr Fawthrop	27.04.2021	REF	PSC	A - Accepted
21/00125/T PO	45 Broadoaks Way Bromley BR2 0UA	T1 Oak - Remove. SUBJECT TO TPO 2319 (8.5.2009)	Shortlands		02.06.2021	REF	PSC	A - Accepted
21/00548/F ULL1	26 Manor Road Beckenham BR3 5LE	Elevational alterations and second/third floor upward extension to existing building incorporating mansard roof and front and rear dormers, excavation of basement and lightwells and construction of four storey rear extension. Conversion of resultant building into 5 no. residential flats (3 no. two bedroom and 2 no. 1 bedroom) with balconies/terraces at first, second and third floor. Formation of surface car parking spaces at rear, provision of rear cycle and refuse storage and 2 no. electric car charging points at front.	Kelsey And Eden Park	Cllr Christine Harris			PSC	
21/00857/F ULL6	128 Jackson Road Bromley BR2 8NX	Conversion of existing side garage into habitable accommodation, construction of a single storey glazed link between the house and garage, side roof dormer, elevational alterations including new windows, construction of front porch and renewal of roof coverings. (Revised scheme to approved application DC/20/01687/FULL6 to allow for new main house roof (revised application following refusal of application 20/04217FULL6))	Bromley Common And Keston	Cllr Michael	02.06.2021	PER	PSC	A - Accepted
21/01292/F ULL6	34 Towncourt Crescent Petts Wood Orpington BR5 1PQ	Loft conversion incorporating dormer to the rear and rooflights to the front	Petts Wood And Knoll	Cllr Fawthrop			PSC	

Application No	Address	Description	Ward	Call In	Decision Issue Date	Decision		Recommend. Accepted or Overturned
21/01310/F ULL6	39 Crossway Petts Wood Orpington BR5 1PE	Two storey front/side extension, a first floor rear extension and a replacement front porch/canopy	Petts Wood And Knoll	Cllr Fawthrop			PSC	
21/01340/F ULL6	150 Kingsway Petts Wood Orpington BR5 1PU	Demolition of existing conservatory. Erection of part single storey/part two storey front/side extension and elevational alterations.	Petts Wood And Knoll	Cllr Onslow			PSC	

This page is left intentionally blank

Appendix 2

(Questions 8 and 9)

(i) Top 5 Reasons for homelessness

1. Family no longer willing or able to accommodate
2. End of private rented tenancy - assured shorthold tenancy
3. Domestic Abuse
4. Friends no longer willing or able to accommodate
5. Relationship with partner ended (non-violent breakdown)

(ii) Previous Accommodation

Last recorded settled accommodation

Living with Family	334
Living with Friends	97
Caravan/houseboat	3
LBB provided TA	25
Council tenant	19
Institution	42
Housing Association tenant	74
Private rented	210
Owner/occupier	4
Shared ownership	1
No fixed abode not rough sleeping	101
No fixed abode rough sleepers	24
Tied accommodation	2
NASS accommodation	5
Women's Aid/refuge	31
Other non-secure	455
Supported accommodation	6
Student accommodation	2
Supported housing	6
Local Authority care	1
Data not available*	339
	1,781

* Due to change in legislation and reporting regime

(iii) Average age of main recipient 37.4 years

(iv) – (vii) Household types composition of applicants in TA

Single persons	501
Single with children	948
With partner and no children	17
With partner and children	80
No data available *	235
No data available*	1781

* System and legislative change, work under way to manually input into reportable fields.

(viii) Total Number of children housed 1,779

Previous place of residence LBB, other London Borough, England, rest of UK, overseas.

This information is not currently able to be reported.

(i) Location of temporary accommodation placements

LB Bromley	406
Other London Borough	831
Kent	524
Neighbouring counties/district	10
Rest of England	10
Scotland	0
Wales	0
Northern Ireland	0
Overseas	0
	1,781

(iii) Cost of nightly paid accommodation

May 2021	Number of Current Clients	Average weekly cost to LBB
Single Room	23	76.04
Studio	135	80.15
Self-Contained (1 Bed)	302	101.97
Self-Contained (2 Bed)	433	124.62
Self-Contained (3 Bed)	222	149.3
Self-Contained (4 Bed)	62	134.62
Weighted Average	1,177	117.94

Council - 18th October 2021

Questions from members of the public for oral reply

1. From Tim Webb to the Portfolio Holder for Environment and Community Services

Crofton Road Cycle Lanes and related developments - is this really value for money, with potholes in roads perhaps a more pressing issue?

2. From Tim Webb to the Portfolio Holder for Environment and Community Services

The bus lay-bys have all been removed, causing traffic delays and tailbacks opposite Orpington Station. What is the logic behind this please and who carried out a risk assessment?

3. From Richard Honess to the Portfolio Holder for Renewal, Recreation and Housing

In 2002 Bromley Council were given £270,000 of Government funding to convert the Rookery Gardens Estate into a Home Zone. Considerable improvements were made which were very much welcomed at the time. What have the Council done to maintain the condition of this Estate?

4. From Tony McPartlan to the Portfolio holder for Renewal, Recreation and Housing

A number of housing association tenants that I know have a growing list of maintenance and safety fixes needed, which are being ignored. What is the council doing to hold housing associations to account and ensure that they are providing a good service to the people of Bromley?

5. From Tony McPartlan to the Portfolio holder for Renewal, Recreation and Housing

At last month's Executive meeting it was discussed how the Additional Restrictions Covid Grant top-up would focus on helping businesses into our vacant units on high streets and industrial units. Can I please get the Portfolio Holder's commitment to support our neglected shopping parades, many of which also have a lot of vacant units?

6. From Hatice Ocal to the Portfolio Holder for Renewal, Recreation and Housing

The public has expressed distrust in the Council ever refurbishing the neglected public toilets in Crystal Palace Park. How can this happen for so long in such a manner which has become an embarrassment for us all. Is the Council addressing this and will it assure the public that the necessary works will be completed by April, 2022?

7. From Hatice Ocal to the Portfolio Holder for Renewal, Recreation and Housing

As of today more than 3,350 park users have signed an e-petition demanding improvements to the toilets in Crystal Palace Park. What is the council going to do in the immediate future to address the appalling state of these toilets?

8. From Jessica Arnold to the Portfolio Holder for Renewal, Recreation and Housing

Has the Council leader, mayor, ward councillors or the relevant portfolio holder received representations from residents in Copers Cope ward who are concerned about empty homes and properties in the area, and is there any action being taken or planned to reduce the numbers of empty properties, reduce the safety risks that surround empty properties, and return them to beneficial use as housing or other public assets for the Copers Cope community?

9. From Jessica Arnold to the Chairman of Development Control Committee

Was planning permission granted for the felling of 12 (or any number of) mature trees on the site of the former Beckenham Theatre (at the junction of Bromley Road and Manor Road in Beckenham), and if so, on what basis was the decision made, and if not, will Bromley Council now be taking enforcement action against the owners of the site?

10. From Will Conway to the Portfolio Holder for Environment and Community Services

The Council has released its Open Spaces Strategy for 2021-2031 which it says includes feedback from earlier consultation with stakeholders. Why was it not sent to, amongst others;

- all those who fed into the document
- Opposition councillors

Key stakeholders such as allotment societies and park "Friends" groups.

Council**18th October 2021****Questions from members of the public for Written Reply****1. From Chloe-Jane Ross to the Portfolio Holder for Renewal, Recreation and Housing**

A large number of applications have and continue to be received for installation of 5G masts (and their antecedents) on public land and footpaths. Where the Council owns the land or has a relevant interest in it, does it receive any rent from these companies and if so, is the rent comparable to rent that would be paid on private property?

2. From Chloe-Jane Ross to the Portfolio Holder for Renewal, Recreation and Housing

Does the Council have any policies or influence to require developers to consider siting 5G masts within larger developments (where they can be installed incongruously). And if not can such be implemented?

3. From Sam Webber to the Portfolio Holder for Adult Care and Health

Could the relevant Portfolio Holder confirm the cost of printing and distributing the '*Special edition update*' covering the COVID-19 pandemic and the help available to all who needed it, especially the most vulnerable, which was distributed in the Summer of 2020?

Was this publication sent out to all residents of the borough via Royal Mail or an alternative provider?

4. From Dermot Mckibbin to the Portfolio Holder for Renewal, Recreation and Housing

What money has the Council obtained from the London Mayor to help deal with homelessness in Bromley in the last 2 years? Has the Council applied for funding to buy back former Council properties following the announcement on 21 June 2021 by Sadiq Khan?

5. From Dermot Mckibbin to the Portfolio Holder for Renewal, Recreation and Housing

What type of applications does the Government's Community Housing fund support and from whom? Please supply details of any Council applications to this fund to increase housing supply in the borough.

6. From Carol Denyer to the Portfolio Holder for Environment and Community Services

The smell of rotting waste at Waldo Road has become particularly unpleasant this year. Is any household waste, food waste or garden waste left on site for more than 24 hours? What is the agreed timescale - Veolia are required to keep to?

7. From Carol Denyer to the Portfolio Holder for Environment and Community Services

I am concerned about the health risks to residents near Waldo Rd and the employees of Veolia. What particulates and/or airborne gases do Veolia measure and where is this monitoring data available to view? If not publicly available, please supply the monitoring data for the 12 months to 31 July 2021.

8. From Julie Ireland to the Portfolio Holder for Environment and Community Services

You have previously indicated that a traffic engineer would visit Holmesdale Road BR2 in September - what was the outcome of this visit and what steps are being considered to alleviate the traffic chaos in Holmesdale Road, particularly when traffic is queuing to use the Waldo Road recycling centre?

9. From Julie Ireland to the Portfolio Holder for Environment and Community Services

Rates of fly tipping have increased everywhere during the pandemic, and Bromley's rate has increased by approximately 25%. Residents expect the Council to catch, fine and prosecute persistent fly-tippers. What steps have Bromley Council taken to improve monitoring in fly tipping hot spots, how many cases have been prosecuted in the last 12 months, what was the cost of those prosecutions and what was the outcome of those prosecutions including financial recompense for Bromley Council?

10. From Stuart Benefield to the Portfolio Holder for Renewal, Recreation and Housing

On 31 August it was reported in the media that LBB had entered into an investment agreement with Pension Insurance Corporation (PIC) to add 300 homes to the council's emergency housing portfolio. Please provide details of this deal including where the houses will be located, who will be providing them, who will be running them and how they will be paid for.

11. From Stuart Benefield to the Portfolio Holder for Renewal, Recreation and Housing

How many refugees from Afghanistan have Bromley Council agreed to offer homes to?

12. From Suraj Gandechea to the Portfolio Holder for Resources, Commissioning and Contract Management

In July 2021 the charity Quaker Social Action undertook a “mystery shopping” investigation into local authorities’ approach to public health funerals and Bromley Council were found to be one of the worst performing councils for the absence of or inaccuracy of information provided both online, in person and by phone. What steps have the Council taken to ensure that they are fulfilling their statutory role and ensure that improvements are made in enabling bereaved people to receive the right support when they need it?

13. From Suraj Gandechea to the Chairman of General Purposes and Licensing Committee

In its annual report for the year to 31 March 2021 the Local Government and Social Care Ombudsman (LGSCO) identified Bromley as the 2nd worst performing borough in London, with the ombudsman upholding 26 complaints from Bromley Residents. Please provide an analysis of these 26 cases including the service being complained about, the nature of the complaint and the action taken to rectify the resident's grievance. Please also explain what steps have been taken by the Council to ensure that residents receive a better service in the future.

14. From Alisa Igoe to the Portfolio Holder for Environment and Community Services

Are Council, as was mentioned at a committee I observed, continuing to dim street lighting from 10pm, is this in every ward and if so, in response to the violent assault in SE London recently, will you be discontinuing this, to provide women and girls of Bromley with maximum night lighting to improve their safety?

15. From Jeremy Adams to the Portfolio Holder for Children, Education and Families

The government announced on Sept 30th that, this month, it will make £500 million available for councils to support vulnerable households to pay for essentials. Can Bromley Council commit to devoting all funds it receives under this scheme to the people of Bromley this winter?

16. From Owen Wittekind to the Portfolio Holder for Children, Education and Families

A report in July found that Bromley had the 8th highest level of food poverty in the UK at 10.3%. At a time of higher bills, lower wages, and a £1040 Universal Credit cut, what steps are the Council taking to ensure that no family goes hungry this Christmas?

17. From Owen Wittekind to the Portfolio Holder for Renewal, Recreation and Housing

Affordable housing is crucial for young people. The Housing Strategy 2019-2029, outlines 1,424 homes need to be built annually to match the rising population. How many new homes were built in Bromley in 2019-2020, how many were affordable homes and what was the cost of building one affordable home?

Council

18th October 2021

Questions from Members of the Council for oral reply

1. From Councillor Nicholas Bennett MA JP to the Leader of the Council

In the preparation of 'Making Bromley Even Better' I and Councillor Fawthrop met the author and made a number of suggestions for the document. The proposals we made do not appear in the final draft. On whose authority were they removed and why were we not consulted before they were excised from the document?

2. From Cllr Angela Wilkins to the Leader of the Council

There have been numerous instances when committee reports of public interest have unnecessarily been kept out of public sight by use of s12A of the Local Government Act. Examples include the sale of Chislehurst Library and, more recently, proposals for new schools in Penge and Walden Woods.

Members of the Labour Group have repeatedly raised concerns about this practice over several years and are grateful to the Chief Executive for his assurance that in future, a report will always be published in the public domain (Part One of every agenda).

Does he agree with me that it is for officers to advise but for councillors to decide at each meeting whether to discuss a report in private?

3. From Cllr Kathy Bance MBE to the Portfolio Holder for Adult Care and Health

How many Afghan families is the Council now accommodating and how many has the Council offered to accommodate?

4. From Cllr Ian Dunn to the Portfolio Holder for Adult Care & Health

The latest budget monitoring report shows a net cumulative balance of £1.855 million in the Public Health Grant. Why is this the case over 18 months into the Pandemic, the greatest Public Health emergency in the last 100 years?

5. From Cllr Ryan Thomson to the Portfolio Holder for Children, Education & Families

What action is the Council taking to ensure that all schools, academies and other relevant education settings in the Borough are made aware of, and encouraged, to access the "Get help with connectivity grants" from the DfE?

6. From Cllr Josh King to the Portfolio Holder for Renewal, Recreation and Housing

Given the end of the eviction ban in March, the impending removal of the Universal Credit uplift and the threat of increased energy prices, what additional measures has the Council introduced to help prevent evictions of the most vulnerable tenants and what has this cost?

7. From Cllr Simon Jeal to the Portfolio Holder for Environment & Community Services

In a statement to Bromley News Shopper earlier this year regarding the draft Open Space strategy, you were quoted as saying "... this strategy was always about conserving and enhancing our parks and open spaces, including woodland and the like, it was never about selling parkland." Can you confirm that this Council is still committed not to dispose of open spaces in Bromley?

8. From Cllr Kevin Brooks to the Portfolio Holder for Environment & Community Services

Does the Portfolio Holder agree that if the various Friends Groups which are connected to the Council receive discounts from idverde, the same should be available for our BID teams as they are also part of LBB?

9. From Cllr Vanessa Allen to the Leader of the Council

Can you please explain the difference between meetings of the Executive (as detailed on the Council's website) and meetings of the Executive (otherwise known as the Cabinet) which are held in private and no minutes published?

10. From Councillor Nicholas Bennett MA JP to the Portfolio Holder for Resources, Commissioning and Contract Management

If he will set out in table format the number of (i) residential, (ii) Commercial (including public sector properties) which have stood empty for

1. 6 months to 1 year
2. 1 year to 2 years
3. 2 years to 5 years
4. 5 years to 10 years
- 5 more than 10 years

What is the longest time any property has remained empty; what action is being taken to bring these properties back into occupation; and how many are owned by the Council?

11. From Cllr Angela Wilkins to the Portfolio Holder for Renewal, Recreation & Housing

What is your assessment of the performance of Clarion Housing Association in relation to repairs and maintenance of their properties?

12. From Cllr Kathy Bance MBE to the Portfolio Holder for Environment and Community Services

What is being done to deter persistent fly-tippers who use recycling depots as dumping grounds for household and restaurant waste?

13. From Cllr Ian Dunn to the Portfolio Holder for Environment and Community Services

Given the recent reduction in the percentage of household refuse being recycled or composted, with the year end projection well below target, what actions has the Portfolio Holder taken to increase recycling & composting?

14. From Cllr Simon Jeal to the Portfolio Holder for Renewal, Recreation and Housing

What support does the Council provide to former members of the armed forces (veterans) returning to Bromley in relation to housing, employment support and other related needs?

This page is left intentionally blank

Council**18th October 2021****Questions from Members of the Council for written reply****1. From Councillor Nicholas Bennett MA JP to the Portfolio Holder for Resources, Commissioning and Contract Management**

Please list the total reserves in each year since 2010 and indicate from where the additional monies accruing to the reserves came from?

2. From Councillor Nicholas Bennett MA JP to the Portfolio Holder for Resources, Commissioning and Contract Management

Please list in table format the following:

the addresses of all properties purchased to provide income; the nature of the property - housing, retail, warehousing etc; the cost of purchase; the source of funding; the annual rent received; the current estimated value; by how much is the Council tax reduced as a result of the income received from these investments?

3. From Cllr Kathy Bance MBE to the Portfolio Holder for Environment and Community Services

Please advise how many penalty tickets have been issued outside schools since LBB installed CCTV cameras outside schools, broken down by school?

4 From Cllr Kathy Bance MBE to the Portfolio Holder for Children, Education and Families:

Please describe how our Sure Start centres have expanded their inhouse services in the last 12 months to help reduce the waiting lists for CAHMS or Bromley Y.

5. From Cllr Angela Wilkins to the Portfolio Holder for Environment and Community Services

Where are the railings formerly installed at Betts Park, which were removed by the Council some time ago? What is planned for their future?

6. From Cllr Angela Wilkins to the Chairman of the Standards Committee

How many complaints against councillors have been received by the Monitoring Officer since May 2018? How many of these have been referred to the Standards Committee in the same period?

7. From Cllr Ian Dunn to the Portfolio Holder for Resources, Commissioning and Contract Management

How many employees are currently on long term sick leave, broken down by department? How many employees have left the Council's employment due to ill health since 2018, broken down by year and department.

8. From Cllr Ian Dunn to the Portfolio Holder for Environment & Community Services

Since May 2016, how many trees (per annum) has the Council planted, broken down by year and ward?

9. From Cllr Vanessa Allen to the Portfolio Holder for Resources, Commissioning and Contract Management

Please provide a list of empty properties registered as businesses in the Borough.

10. From Cllr Vanessa Allen to the Chairman of General Purposes and Licensing Committee

Please provide details (ie names, dates & amounts) of councillors' out of borough expenses since May 2018.

11. From Cllr Simon Jeal to the Portfolio Holder for Resources, Commissioning and Contract Management

Could you please provide a breakdown detailing the value of council spending in each of the past five financial years on communications, PR and marketing staff and activities?

Report No.
CSD21107

London Borough of Bromley

PART ONE - PUBLIC

Decision Maker: **COUNCIL**

Date: **Monday 18 October 2021**

Decision Type: Non-Urgent Executive Key

Title: **MAKING BROMLEY EVEN BETTER**

Contact Officer: Graham Walton, Democratic Services Manager
Tel: 0208 461 7743 E-mail: graham.walton@bromley.gov.uk

Chief Officer: Ade Adetosoye OBE, Chief Executive

Ward: All

1. Reason for report

- 1.1 The Council has worked successfully with its partners for many years to deliver its corporate strategy, "Building a Better Bromley." At its meeting on 15th September 2021, the Executive considered the attached report on a refreshed corporate strategy – "Making Bromley Even Better" – and recommended that Council approve the new strategy. (Full Council approval is required as the corporate strategy forms part of the Council's Policy Framework.) The report was also scrutinised and supported by Executive, Resources and Contracts PDS Committee on 15th September 2021.

2. **RECOMMENDATION**

The refreshed corporate strategy, "Making Bromley Even Better 2021-2031" be approved.

Impact on Vulnerable Adults and Children

1. Summary of Impact: The ambitions set out in the refreshed plan seek to ensure that vulnerable children and adults continue to be supported as required.
-

Corporate Policy

1. Policy Status: Developing the corporate strategy.
 2. BBB Priority: All
-

Financial

1. Cost of proposal: Not Applicable:
 2. Ongoing costs: Not Applicable:
 3. Budget head/performance centre: Not Applicable
 4. Total current budget for this head: Not Applicable
 5. Source of funding: Not Applicable
-

Personnel

1. Number of staff (current and additional): Not Applicable
 2. If from existing staff resources, number of staff hours: Not Applicable
-

Legal

1. Legal Requirement: Non-Statutory - Government Guidance
 2. Call-in: Not Applicable: Council decisions are not subject to call-in
-

Procurement

1. Summary of Procurement Implications: Not Applicable
-

Customer Impact

1. Estimated number of users/beneficiaries (current and projected): Approximately 330,000 residents living in Bromley with population projections estimating an increase to 350,000 by 2027 and 395,000 by 2038.
-

Ward Councillor Views

1. Have Ward Councillors been asked for comments? Not Applicable
2. Summary of Ward Councillors comments: Not Applicable

Non-Applicable Sections:	See attached report
Background Documents: (Access via Contact Officer)	See attached report

Decision Maker: Executive

Date: 15th September 2021

Decision Type: Non-Urgent Executive Non-Key

Title: Making Bromley Even Better 2021 -2031

Contact Officer: Naheed Chaudhry,
Assistant Director Strategy, Performance and Corporate Transformation

Chief Officer: Ade Adetosoye, Chief Executive

Ward: All wards

1. Reason for report

Bromley Council and partners have been working together to deliver our corporate strategy "Building a better Bromley". We have achieved much by maintaining our focus and harnessing our collective resources.

This report presents our refreshed corporate strategy "Making Bromely Even Better" 2021-2031, the ambitions outlined will be delivered through a wide range of strategic and operational plans across the Council and partner agencies.

2. **RECOMMENDATION(S)**

The Executive are asked to:

- i) Approve the refreshed Corporate Strategy; Making Bromley Even Better 2021-2031

Impact on Vulnerable Adults and Children

1. Summary of Impact: The ambitions set out within the refreshed plan seek to ensure that vulnerable children and adults continue to be supported as required.
-

Corporate Policy

1. Policy Status: Not Applicable:
 2. BBB Priority: All.
-

Financial

1. Cost of proposal: Not Applicable:
 2. Ongoing costs: Not Applicable:
 3. Budget head/performance centre: N/A
 4. Total current budget for this head: £N/A
 5. Source of funding: N/A
-

Personnel

1. Number of staff (current and additional): N/A
 2. If from existing staff resources, number of staff hours: N/A
-

Legal

1. Legal Requirement: Non-Statutory - Government Guidance:
 2. Call-in: Applicable:
-

Procurement

1. Summary of Procurement Implications: N/A
-

Customer Impact

1. Estimated number of users/beneficiaries (current and projected): Approximately 330,000 residents living in Bromley with population projections estimating an increase to 350,000 by 2027 and 395,000 by 2038.
-

Ward Councillor Views

1. Have Ward Councillors been asked for comments? No
2. Summary of Ward Councillors comments:

3. COMMENTARY

- 3.1 Bromley Council and partners have been working together to deliver the Boroughs Corporate Strategy. We have achieved much by maintaining our focus and harnessing our collective resources.
- 3.2 This report presents a refreshed plan, building on our achievements. We are committed to taking the next steps in **'Making Bromley Even Better'**.
- 3.3 Our vision for Bromley is simple and clear. We want our borough to be ***'A fantastic place to live and work, where everyone can lead healthy, safe and independent lives'***
- 3.4 We have five ambitions for the next stage of our journey. These are:
1. For children and young people to grow up, thrive and have the best life chances in families who flourish and are happy to call Bromley home.
 2. For adults and older people to enjoy fulfilled and successful lives in Bromley, ageing well, retaining independence and making choices.
 3. For people to make their homes in Bromley and for business, enterprise and the third sector to prosper.
 4. For residents to live responsibly and prosper in a safe, clean and green environment great for today and a sustainable future.
 5. To manage our resources well, providing value for money, and efficient and effective services for Bromley's residents.
- 3.5 Our ambitions will be delivered jointly by the Council and partner agencies. We believe firmly that strong partnerships across local public services, our voluntary and community sectors, faith and community groups and business are key to delivering our plans. We know that agencies in the partnership commission and provide many of the services which matter to residents and businesses in Bromley. Working individually and in partnerships we share responsibility for improving outcomes in the borough. We are convinced that by aligning ambitions and by strengthening our collaboration, we will succeed in making Bromley an even better borough. Pledging our support for this plan, we will be held accountable for its delivery.

4. SERVICE PROFILE / DATA ANALYSIS

- 4.1 Data analysis and performance benchmarking have informed the ambitions in this plan. What we know about Bromley today is an important starting off point– how we describe the borough helps us think about how we would want to describe it in the future and what we need to do to make this happen.
- 4.2 Bromley is the largest London borough by area. It is a unique mix of urban and rural, with distinct town centres and over half the borough designated as green belt. We are the 8th most populous London borough. There are approximately 331,000 residents living in an estimated 141,000 households.
- 4.3 22% of our population is aged 18 and under - some 71,000 young people. The proportion of working age residents (18 to 65 years) will remain fairly stable over the next twenty years, at approximately 60% of the total population (200,500 people). We have the largest population of older people of all London boroughs - 18% of the current population is aged 65 and over (58,700 people), 15% of our residents are retired, which is approximately double the London average of 7%. 20% of Bromley's population is made up of different minority ethnic groups. 29%

of the borough's current children and young people population are from minority ethnic groups. Bromley has one of the highest populations of settled travellers in the UK.

- 4.4 Bromley employment rate of 78% is the 7th highest of the 21 Outer London Boroughs. 165,000 of our residents are economically active with 80,000 commuting outside the borough for work and 109,200 employed within the borough. There are 15,000+ individual enterprises in the borough. Over 86% of our enterprises are small businesses with fewer than 5 employees. We also have 45 large enterprises with more than 250 employees. Our unemployment rate is the 2nd lowest of the Outer London Boroughs at 3.7%.

5 STAKEHOLDER CONSULTATION

- 5.1 Partners and Council staff have been consulted during the refresh of this plan. We have asked residents, staff and partners 'What is good about living and working in the borough?'. In responses to the 'I Love Bromley' engagement campaign, people have made a wide range of comments, many repeating similar views;
- 5.2 I love Bromley because.....
- ✓ *It's green, the parks and open spaces are well kept and accessible*
 - ✓ *It has natural beauty with its fields and trees*
 - ✓ *There's a sense of community, there's lots to do and get involved with*
 - ✓ *It's got good transport links, excellent links to London*
 - ✓ *The high streets and town centres are great, it's urban but close to lovely countryside*
 - ✓ *I know people care in Bromley - there's a great community spirit*
 - ✓ *Bromley has excellent schools, I know my children have a positive future in Bromley*
- 5.3 We have used this engagement to shape our ambitions; building on what we know is good about the borough.
- 5.4 We also consulted over 100 Council staff who attended workshops to review the proposed ambitions. There was strong support that the ambitions appropriately reflected the priorities of the Council and its partners. Staff felt that having clear ambitions which filtered through from the corporate plan into strategic documents and their personal work plans were important motivational drivers. We have made provisions to ensure this "golden thread" approach.

6 SUSTAINABILITY / IMPACT ASSESSMENT

- 6.1 We know that we have refreshed our plan and drafted our five ambitions in the context of unprecedented demands on public services and the ongoing need for financial stringency. Our response to the Covid-19 pandemic demonstrated our huge collective strength, it is a testament to our joint ability to respond at pace to deliver what is required.
- 6.2 The ongoing need for adaptability to changing circumstances and new pressures means that during the delivery of this plan we must also continue to be transformational in the ways in which we deliver services; in the ways in which we work as a partnership and in the ways in which we engage with our residents, service users and communities.

7 IMPACT ON VULNERABLE ADULTS AND CHILDREN

- 7.1 In order to achieve our vision of Bromley as '*a fantastic place to live and work, where everyone can lead healthy, safe and independent lives*' we are explicit about our ambitions for children and adults, including those who are more vulnerable.

8 POLICY IMPLICATIONS

- 8.1 The national and local context has changed since our last corporate plan was launched, external tests of the efficiency and effectiveness of councils have been withdrawn or reduced. The abolition of the Audit Commission, the ending of the Comprehensive Area Assessment regime and the Localism Act have left councils with greater autonomy in the ways in which they plan and deliver services with more local accountability. Arguably, these steps have increased the need for councils to ensure their own efficiency and effectiveness and to 'self-regulate'.
- 8.2 Learning from past and present external corporate assessment and service inspection regimes includes the importance of self-knowledge throughout an organisation – in simple terms, people in effective organisations know the organisation's vision, objectives; priorities and plans; how well they are performing against these plans and what needs to be done for plans to be achieved. We recognise that Leaders and managers in effective organisations put in place clear frameworks for planning and performance management at all levels and make rational decisions about priorities and performance based on sound information.

9 FINANCIAL IMPLICATIONS

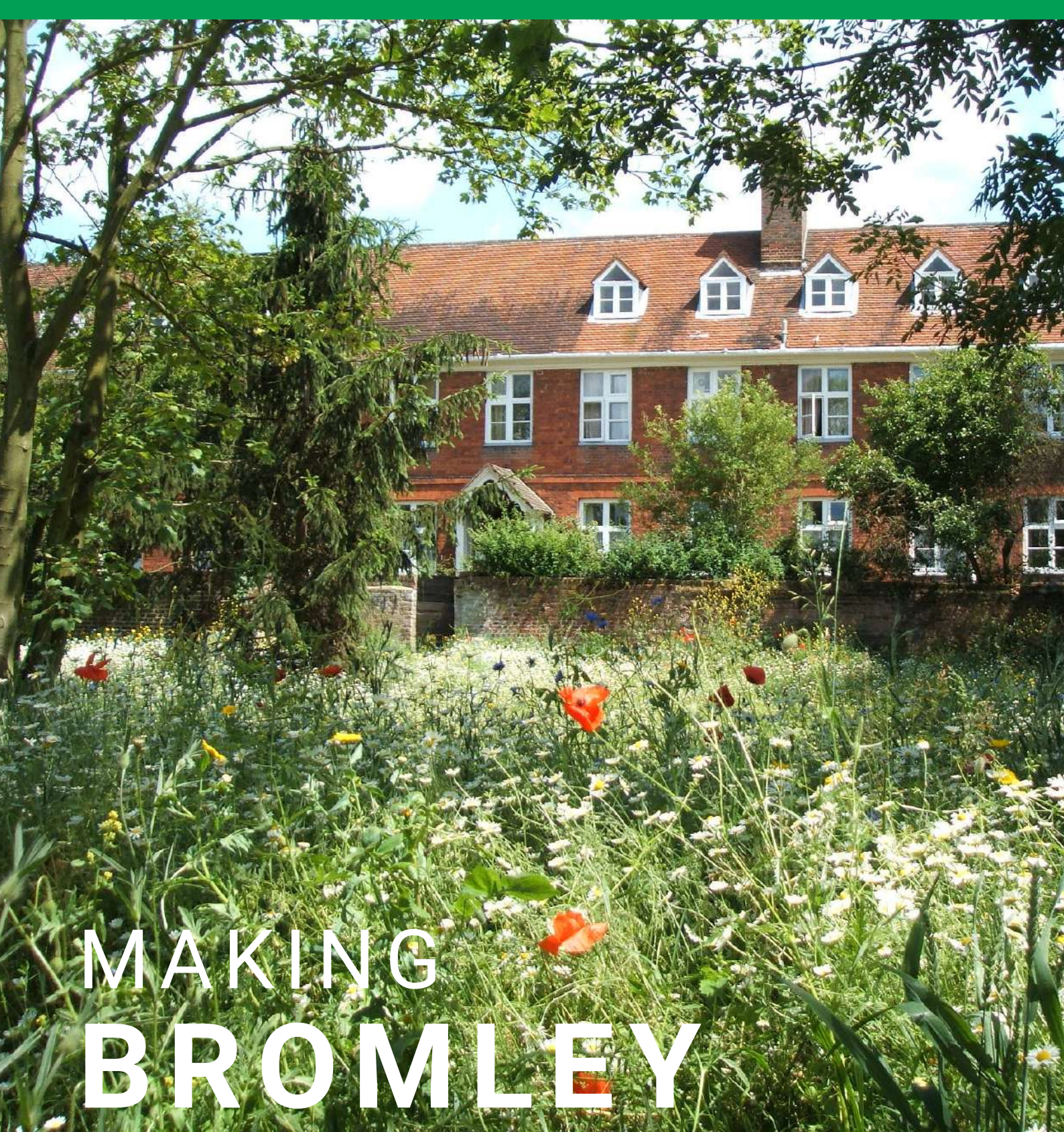
- 9.1 To meet the ambitions for our residents we know that as agencies across the partnership we must use available resources and deploy our workforce wisely. We have therefore agreed a fifth ambition: Service Efficiency - 'To manage our resources well, providing value for money, and efficient and effective services for Bromley's residents. The Council's commitment to deliver this new corporate plan will inform the Medium Term Financial Strategy.

10 LEGAL CONSIDERATIONS

- 10.1 There is no statutory requirement for Councils or partners to jointly draft an overarching plan. However there remain subject specific statutory expectations for agencies to work together - for example, partners are required to have specific arrangements in place for co-operation to improve children's well-being, for the support of older people, and for the promotion of community safety. These expectations provide flexibility to tailor arrangements to meet our own circumstances and organise our own planning and commissioning priorities.

Non-Applicable Sections:	[List non-applicable sections here]
Background Documents: (Access via Contact Officer)	[Title of document and date] [Appendices to be included]

This page is left intentionally blank



MAKING BROMLEY


EVEN BETTER

2021 TO 2031

OUR CORPORATE
STRATEGY



THE LONDON BOROUGH
Page 75



**Bromley, a fantastic
place to live and
work, where
everyone can lead
healthy, safe and
independent lives**

Contents

4

Foreword

6

About Bromley

9

Our vision
and ambitions

10

Our values

11

Ambition one

For children and young people to grow up, thrive and have the best life chances in families who flourish and are happy to call Bromley home

16

Ambition two

For adults and older people to enjoy fulfilled and successful lives in Bromley, ageing well, retaining independence and making choices

21

Ambition three

For people to make their homes in Bromley, and for business, enterprise and the third sector to prosper

25

Ambition four

For residents to live responsibly and prosper in a safe, clean and green environment great for today and a sustainable future

29

Ambition five

To manage our resources well, providing value for money, efficient and effective services for Bromley’s residents

31

How we will
deliver and monitor
this Plan

Foreword

Leader of the Council

The Council and its partners have been working together to deliver our corporate plan, *Building a Better Bromley*.

We have achieved much by harnessing resources and strengthening our partnerships. Creating an environment where individuals and communities thrive and prosper, enjoying independent and self-reliant lives. We have now updated our plan to build on our achievements, refreshing our vision and ambitions:

“ ...'*Making Bromley Even Better*'...
*a fantastic place to live and work, where everyone
can lead healthy, safe and independent lives*

These are unprecedented time with extraordinary demands on public services and funding. We must be transformative in the ways in which we deliver services, ensuring value for money and improved outcomes. We are clear about the benefits of collaboration and the value of strong partnerships. The COVID-19 pandemic has shown how the Council, working with partners, can be agile in responding to sudden demands. As partners we share responsibility for improving outcomes in our borough. We are convinced that by aligning our vision our ambitions we will succeed in Making Bromley Even Better.

No plan can be set in stone. Our Corporate Strategy is a high-level and overarching plan representing our aspirations for the next ten years. We will develop our plan as circumstances, demand and legislative changes require.



Councillor Colin Smith

Leader of Bromley Council

Bromley partners

- London Borough of Bromley
- London Metropolitan Police
- London Fire Brigade
- NHS South East London Clinical Commissioning Group
- King's College Hospital NHS Foundation Trust
- Oxleas NHS Foundation Trust
- Bromley Healthcare
- Voluntary and community sectors, faith, and community groups
- Community Links Bromley
- Youth volunteering organisations
- Transport for London
- Bromley Federation of Housing Associations
- Residents' groups and associations
- Bromley Friends Groups
- Bromley Chamber of Commerce
- Traders' associations
- Jobcentre Plus
- School Headteachers Forum
- Academy Trusts
- London South East Colleges
- Government departments and the Mayor of London



About Bromley



330,000+

people live in
Bromley



Largest

London borough
by area



51%

designated as
green belt land



72%

of homes are
privately owned



129

open spaces
and parks



4th

least deprived
London borough



50%+

household waste
is recycled



2,000

people receive
care in their home



78%

of adults are in
employment

Bromley is the largest London borough by area, covering 59 square miles. Over half the borough is open countryside, much of which is Metropolitan Green Belt land. Bromley has relatively low levels of deprivation – it is the 4th least deprived of the 33 London boroughs.

We are the 8th most populous London borough. There are approximately 331,000 residents living in an estimated 141,000 households. 22% of our population is aged 18 and under - some 71,000 young people. The proportion of working age residents (18 to 65 years) will remain fairly stable over the next twenty years, at approximately 60% of the total population (200,500 people). We have the largest population of older people of all London boroughs - 18% of the current population is aged 65 and over (58,700 people) and 15% of our residents are retired, which is approximately double the London average of 7%.

20% of Bromley's population is made up of different minority ethnic groups. 29% of the borough's current children and young people population are from minority ethnic groups. Bromley has one of the highest populations of settled travellers in the UK.

Bromley's employment rate of 78% is the 7th highest of the 21 Outer London Boroughs. 165,000 of our residents are economically active with 80,000 commuting outside the borough for work and 109,200 employed within the borough. There are 15,000+ individual enterprises in the borough. Over 86% of our enterprises are small businesses with fewer than 5 employees. We also have 45 large enterprises with more than 250 employees. Our unemployment rate is the 2nd lowest of the Outer London Boroughs at 3.7%.

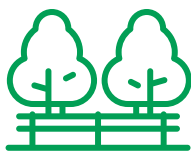


Love Bromley

What is it like to live and work in Bromley?

We asked for responses to our 'I Love Bromley' campaign; we heard consistent feedback.

I love Bromley because...



"It's green, the parks and open spaces are well kept and accessible"



"It has natural beauty with its fields and trees"



"There's a sense of community, there's lots to do and get involved with"



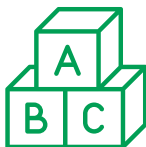
"It's got good transport links, excellent links to London"



"The high streets and town centres are great, it's urban but close to lovely countryside"



"I know people care in Bromley - there's a great community spirit"



"Bromley has excellent schools, I know my children have a positive future in Bromley"

We wanted this plan to build on what we love about Bromley.

Our vision and ambitions

We want Bromley to be...

a fantastic place to live and work, where everyone can lead healthy, safe and independent lives

Our plan will be delivered jointly by the Council and partner agencies. We firmly believe that strong partnerships formed the foundation of our previous plan 'Building a Better Bromley'.

Together we have five new ambitions:

- 1 For children and young people to grow up, thrive and have the best life chances in families who flourish and are happy to call Bromley home.
- 2 For adults and older people to enjoy fulfilled and successful lives in Bromley, ageing well, retaining independence and making choices.
- 3 For people to make their homes in Bromley and for business, enterprise and the third sector to prosper.
- 4 For residents to live responsibly and prosper in a safe, clean and green environment great for today and a sustainable future.
- 5 To manage our resources well, providing value for money, and efficient and effective services for Bromley's residents.

Our values

These values inform how we will deliver our ambitions:

We want to be a borough of opportunities for all those who live and work in Bromley to lead successful and fulfilling lives.

We want to encourage responsible resilience in individuals, families and communities, and in business and enterprise.

When appropriate, we want to provide effective early intervention to address problems and challenges in people's lives.

We will work with compassion and care with individuals and families who need additional support and specialist services.

We want to be an inclusive borough providing services which are relevant to our differing needs and aspirations and which champions success for all

We are prepared to take risks and to innovate where this enables us to make better use of public and private funding.

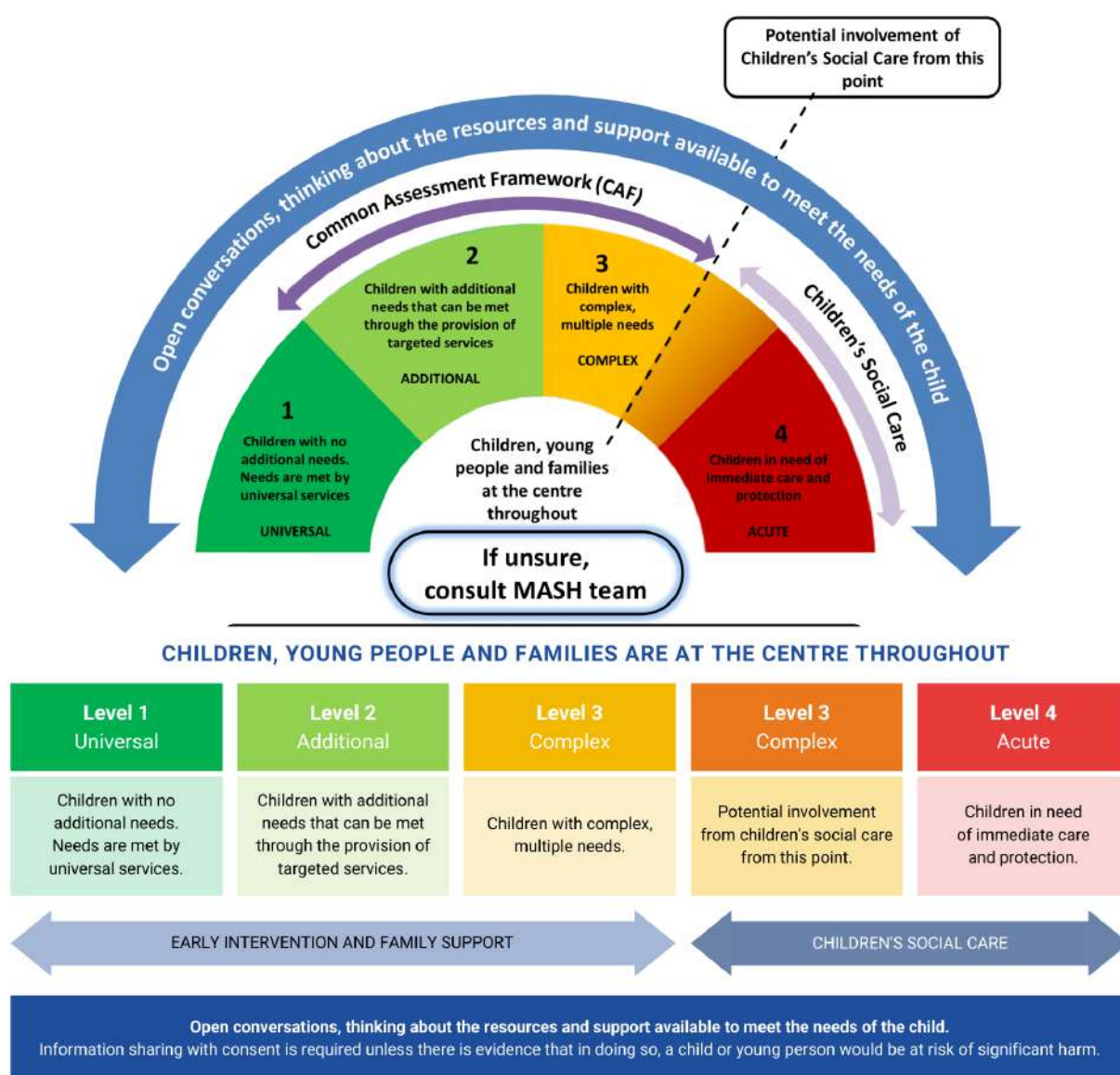
We want strong engagement and dialogue with our residents and the people who use our services to better understand and meet our challenges.

We know our services need to provide value for money for local taxpayers, residents and businesses.

Ambition one

For children and young people to grow up, thrive and have the best life chances in families who flourish and are happy to call Bromley home.

Children and families are at the heart of our ambitions. Our services need to promote the wellbeing and inclusion of all children in the borough within resilient families. This means we need to provide the best quality universal services alongside effective early intervention, targeted and specialist services delivered to the right people at the right time. As a partnership we have developed a model to help us meet this very wide range of needs:



Where are we now?

Our early years settings and schools are mostly rated good or better by our regulators. Of the state-funded schools in Bromley, 97% are currently rated good or outstanding and pupils overall attain very highly, above national averages. We're proud of our educational outcomes which are comparable to the top ten performing local authorities in the country. However, we have work to do to narrow the gap for children and young people who have special educational needs and disabilities and children in care. Our participation rate is amongst the highest in London with most young people aged 16 to 18 remaining in education, training towards their profession or already in employment.

The vast majority of children and young people in the borough are from settled family backgrounds and educated at many of our outstanding educational settings. We recognise that parents and children should be supported through their choice of educational setting, including local authority maintained schools, academies, selective schools and independent schools.

Children and young people in the borough are physically healthy, with relatively low rates of obesity. However, as elsewhere in the country, emotional wellbeing and mental health problems are increasing. The borough's children's social care services have improved and are now rated 'good' by Ofsted delivered with 'outstanding' leadership. Partnerships are developing between the Council, Department for Work and Pensions (DWP), Jobcentre Plus and housing agencies to improve outcomes for care leavers. The recent inspection of arrangements for children who have special educational needs and disabilities (SEND) found improving multi-agency assessment and planning and partners working steadily to implement the SEND reforms. Bromley youth offending services are developing with rates of first-time entrants into the youth justice system and reoffending below the national averages.

There were over 100,000 visits to Bromley's Children and Families Centres in 2019 to 2020 and over 900 families were provided with early help support by the Bromley Children Project. There were over 7,700 enquiries made to Bromley's Multi-Agency Safeguarding Hub (MASH) and over 3,400 referrals to children's social care services. Around 300 children are looked after by the Council and another 300 have Child Protection Plans. Over 3,000 children who have SEND have Education, Health and Care (EHC) Plans.

What we will do

To ensure that Bromley's universal offer to families remains high we will:

Support the local **childcare and early education market to maintain high standards** and a **good level of choice** for parents, promoting inclusion and school readiness as well as monitoring those children who are educated at home.

Build on the success of Bromley's excellent schools, academies and further education offer. We consistently deliver a high 'first choice' school preference for our children and we will continue to ensure a sufficiency of school places in high quality provision, enabling high quality local choice for parents and young people.

Work with our partners across the education sector to **improve outcomes for all children and young people across the range of academic abilities** – this includes enabling children who learnt from home during the pandemic to catch up.

Implement our **Health and Wellbeing strategy** focusing primary healthcare resources including Health Visitors and school nurses on promoting protective factors including breastfeeding, immunisations and healthy lifestyles, responding to issues such as obesity, substance misuse, sexual health and mental health.



Bromley's Children and Young People Plan sets out the Partnership's priorities for children who may be more vulnerable to poorer outcomes than their peers. While there has been rapid improvement in some key children's services over the last few years, we are ambitious to improve outcomes for children still further and so we will:

Embed our **wellbeing model** across the multi-agency children's workforce to further improve the identification of additional needs in children, to improve assessment of need and risk, and to improve access to targeted and specialist services.

Encourage take up of our **multi-agency early help services**.

Continue to improve our **children's safeguarding practice** in Bromley, embedding the statutory safeguarding partnership and strengthening our focus on non-familial (contextual) safeguarding risks, including children going missing, children missing education, child sexual and criminal exploitation, and gang affiliation.

Maintain a relentless focus on improving outcomes for **Bromley's looked after children and care leavers**. In order to meet the pledge the Council has made to these young people, we will continue to develop our partnerships across the Council, NHS, DWP and housing providers to: increase the choice of high quality placements; improve our education offer; help young people maintain good health and wellbeing; and increase housing and employment opportunities.

Build on the progress we have made in improving services for **children who have SEND** by implementing our SEND vision and priorities. Working collaboratively across agencies and with families to improve the EHC planning process and develop the Local Offer.

Promote the proper **inclusion of young people who have SEND in local universal services**, through: developing and implementing joint commissioning strategies; prioritising localise needs, including increasing more local specialist placement choice; and establishing a service structure which supports mainstream schools, settings and partnership working.

Develop our offer to **young adults aged 18 to 25** who have SEND, including improving transitions into adulthood and, for those with continuing needs, adult services.

Work collaboratively across the Council, schools, health and voluntary sector services to improve the identification of, and support to, children and young people who are **young carers**.

Work to improve the **emotional wellbeing and mental health of young people** in Bromley, providing support earlier in schools and other settings, and improving access to, and waiting times for, more specialist Child and Adolescent Mental Health Services (CAMHS). We will focus resources on improving our response to: young people with eating disorders; perpetrators and victims of sexually harmful behaviour; and young people in youth offending services (YOS).

Deliver our Youth Justice strategy by working holistically and collaboratively to deliver our 'child first, offender second' principle – aiming to reduce the numbers of children and young people offending or at risk of offending, including developing the YOS work with younger offenders and our partnership approach to addressing harmful gang activity and violent crime. We will continue to engage offenders and victims in developing our restorative justice approaches.

Provide venues where **young people can mix in a safe environment**, learn, explore and develop skills and where, if required, early intervention can be identified, including vocational training and apprenticeships in line with local business needs.

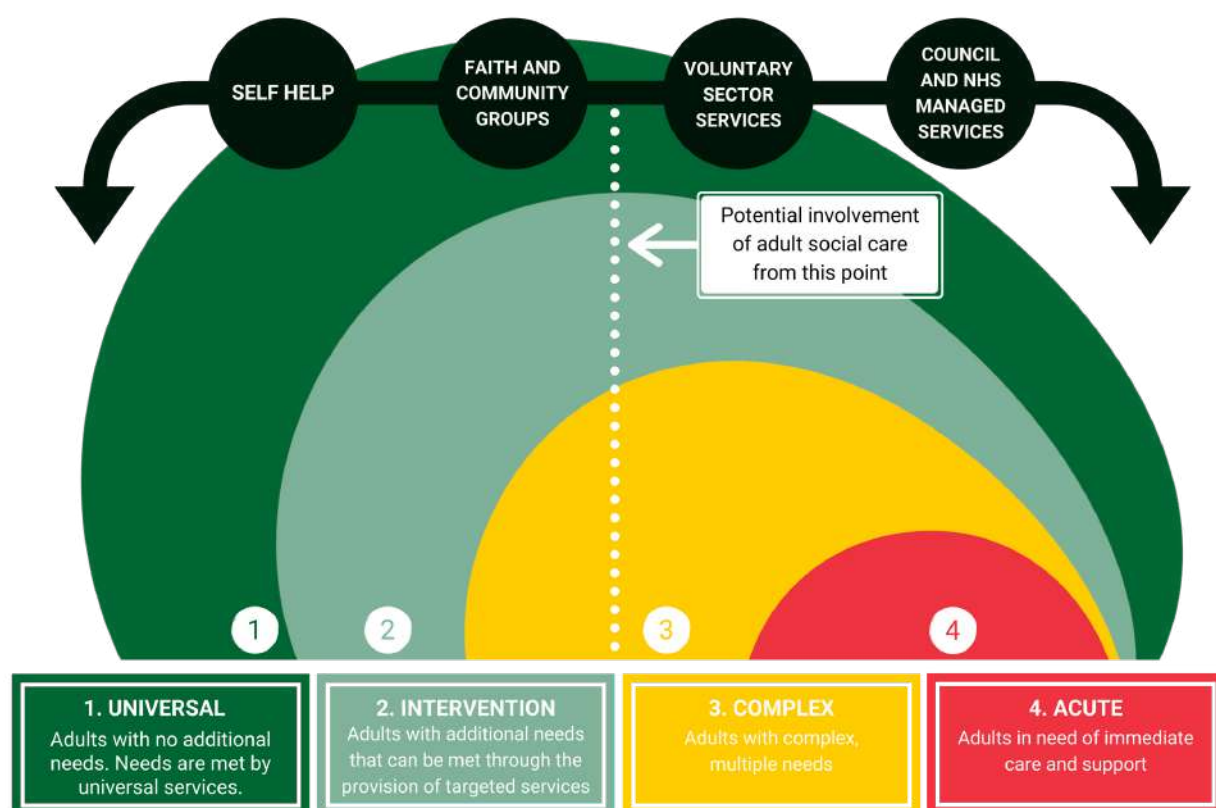


Ambition two

For adults and older people to enjoy fulfilled and successful lives in Bromley, ageing well, retaining independence and making choices.

Adults and older people contribute greatly to Bromley and should expect high quality services when they need them. Good health and wellbeing are the foundation for independence and resilience, and we want to promote health and tackle health inequalities across the borough. We need to provide accessible and effective services for adults with additional needs and give the right support to our older residents as they age. We need our social care, health, third sector and faith sector resources to be 'joined up' and need to work collaboratively with individuals to provide person-centred and personalised care.

Similar to our wellbeing model for children's services, we have adopted a continuum of care model to support the assessment of additional needs in adults and older people and to ensure residents receive the right care, in the right place and at the right time.



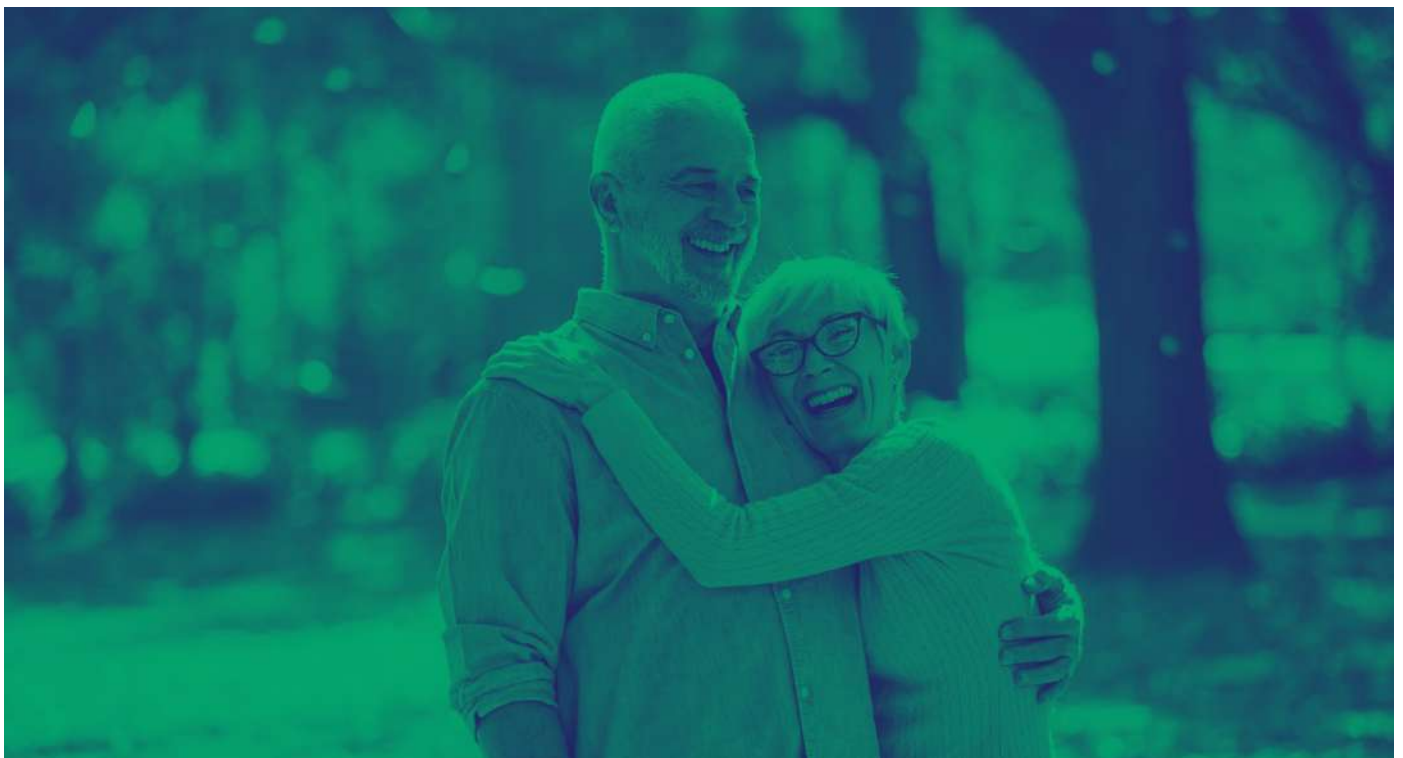
Our rising population presents enormous challenges for services in the coming years and use of this model by our workforce will help us target and make better use of our resources in the future.

Where are we now?

Over 50% of Bromley's working age population have qualifications beyond A-Levels and only 3% have no qualifications, significantly better than the England average. Income levels in the borough are significantly above the London average. The adult unemployment rate is lower than the London average.

The health of adults in Bromley is generally better than the national average. Life expectancy of 81 years for males and 85 years for females exceeds national figures, although there is lower life expectancy, by up to 7 years, in some parts of the borough. Levels of adult obesity are lower than national averages although, with around 53% of Bromley's adults overweight or obese, remain concerning. Some 14% of Bromley's adults smoke, around the average for London and just below national rates. Hospital admissions for alcohol-related conditions are below London and national figures. In common with other areas, the proportion of residents with mental health problems has increased demand pressures on services during the COVID-19 pandemic.

Most health services and social care services operating in Bromley are rated good by external regulators. The Council, health services, contractors and local voluntary and community sector provide services for a high and increasing number of adults and older people with support needs. Over 750 requests for support are made each month for adults and older people's services. Over 2,000 people receive packages of support in the community and high numbers of service users receive personal budgets to fund their care. Over 1,500 residents live in residential care or nursing homes of which approximately 25% are Council-funded placements.



What we will do

To ensure that we continue to develop our universal targeted and specialist services for adults and older people in Bromley we will:

Deliver our **Health and Wellbeing strategy** to help improve health outcomes for adults.

Influence the health economy through the Bromley Borough-Based Board to ensure that the right services are commissioned for Bromley residents.

Continue the development of the One Bromley Local Care Partnership, delivering **integrated health and social care services in line with the NHS Long Term Plan**. This means strengthening our partnership practice across social care and health services to make the best use of our resources.

Implement our 'Roadmap to Excellence in Adult Social Care', **adopting a strengths-based approach** with a greater emphasis on prevention and early help and more strongly engaging family and community in supporting individuals.

With a strong **focus on wellbeing and prevention**, build on improvements made including the implementation of new multi-disciplinary preventive pathways and the establishment of Primary Care Networks.

Work with the NHS South East London Integrated Care System (of which we are part) to see what services changes implemented during the pandemic should remain and will consider **what else might successfully be decentralised and delivered closer to people's homes**.

Deliver our **Ageing Well strategy**, enabling older people to retain their independence for as long as possible with the assistance of family, friends, faith and community groups, the voluntary sector and local authority and health services.

Focus our efforts on **ensuring older people are safe and safeguarded**, protected from financial abuse, remain connected to their communities, live in homes suitable for their needs and aspirations while maintaining and improving their health.

Deliver our **Mental Health and Wellbeing strategy**, improving prevention and early intervention, developing integrated multi-disciplinary and multi-agency approaches to treatment and improving support to adults with long-term and complex needs, better supporting recovery and rehabilitation of all those with mental health challenges.

Develop our offer for adults who have learning disabilities in the borough, helping individuals to be as independent as possible and living in supportive and inclusive communities. We will seek to harness our multi-agency resources to tackle social isolation, to provide more choice of supported accommodation and housing and boost employment opportunities for this group.

Work with carers, including young carers, and those providing support to carers, to better understand and meet their needs and aspirations. Carers form one of the most important foundation stones in Bromley's health and social care system and we recognise the need to boost support to and resilience of this group.

Continue to encourage **education and skills development** in our adult population maintaining and developing our education and skills offer in Bromley, to enable residents to be well placed for employment opportunities in Bromley and elsewhere.

Build further on DWP-led partnership initiatives to **develop a 'one stop' wraparound approach in Jobcentres** to improve access of jobseekers to services which meet their broader needs including housing and health support. DWP will maintain a focus on supporting specific groups into employment including care leavers and older people wishing to return to work.

Deliver our mitigating Loneliness Initiative – aiming to reduce isolation and improve the wellbeing of Bromley residents. **Ensuring we maximise the use of volunteers** to achieve community resilience and that we appropriately acknowledge and encourage their contribution to the community.



Explore and **implement innovation** in seeking to improve outcomes for service users and make best use of the resources at our disposal. Bromley's more recent innovations and pilots include:

- Bromley Well – a range of services delivered by a partnership of local voluntary sector organisations supporting the health, wellbeing and independence of those who have learning difficulties or long-term health conditions, and older people and carers.
- Reablement Service and Single Point of Access to Discharge (SPA) - both focused on reducing admissions and length of admissions of older people to hospital and, with domiciliary care and Telecare services, promoting the ability of older people to remain in their own homes.
- Shared Lives – providing support and accommodation in family homes for adults who have learning disabilities.
- The Care Homes Improvement Project – designed to improve and enhance medical support to residents of residential care homes in Bromley, improving their wellbeing and reducing hospital admissions from care homes.

All these initiatives are seeking new ways to improve outcomes and the cost effectiveness of public services in the borough, and we are committed to innovate further in the coming years to meet these goals.



Ambition three

For people to make their homes in Bromley, and for business, enterprise and the third sector to prosper.

We want to enable Bromley residents to thrive in the borough by having access to high quality and affordable homes in supportive communities as described in our Housing Strategy. We want our town centres to be vibrant and attractive and we want business and enterprise to flourish and bring opportunities to the borough. We want to continue to support and attract qualified and skilled people who can make their livelihoods in Bromley and contribute to our success.

Our Economic Development plan was published whilst we grappled with the greatest pandemic that the globe has experienced in over a century. The effects of this are being felt across our economy every day – locally, nationally and internationally. We have seen changes in the way that people are working and the work that they are doing. We expect some change to continue in the medium-term and longer-term. However, our borough is well placed to continue to thrive, to recover and to embrace the changes in our economy. We have good foundations upon which we will continue to build to make the most of the opportunities that these challenges offer us. We continue to leverage investment into the borough which is supporting our economy through the establishment of new businesses, the regeneration of our urban and rural areas, and a focus on developing our renewal areas that are identified in our Local Plan. We are rightly ambitious for our borough – both for now and in the future.

Digital infrastructure that is future-proof is vital for a growing local economy. The demand for fast and reliable connectivity has been growing at an unprecedented rate from both homes and businesses and as such it is more critical than ever that this is matched through digital infrastructure provision.



Where are we now?

The number of households in Bromley is set to increase by around 12% over the next ten years in line with the projected population growth. With homes remaining relatively affordable in the borough, levels of home ownership, at around 72% of households in Bromley, are high compared to other London boroughs. The borough has relatively low levels of social housing compared to other London boroughs, nearly 14% of all available housing against a London average of 23%. Numbers of homeless households have increased, with over 1,500 households living in temporary accommodation. We are responding to these challenges through our Housing and Homelessness strategies.

The Council has published a Regeneration strategy and new Economic Development plan, the first of its kind in Bromley. We are open for business and, through our proactive approach, we continue to support our existing businesses whilst encouraging new businesses to develop and thrive. Our strategies provide insight into our economy, our aspirations to support economic growth and the key priority areas that will enable the achievement of this desired growth over the next 10 years. The Council also adopted a new planning and development Local Plan.

We have been working hard delivering a strong and fair enforcement policy regulating trading standards and licensing across the borough, whilst working with local business and enterprise to develop Business Improvement Districts (BID) in Bromley, Beckenham, Penge and Orpington, designed to encourage economic development and vitality in our town centres and commercial areas. There has been significant investment in public realm works across the borough to support our town centres to thrive. We have maintained our commitment to high quality leisure and library services, securing their future through strong engagement with the community.

We are proud of our cultural heritage and the contribution that some of our residents have made on the international stage, including Charles Darwin and, more recently, David Bowie. We have a fantastic local arts and culture offer including the beautiful Bromley Churchill Theatre.

Bromley has a vibrant and thriving voluntary and community sector active in the borough. Connecting thousands of residents, the sector plays a key role in the wellbeing of the borough's residents, providing both specific contracted services for particular groups of residents and elective support services to the community. There are high levels of volunteering in Bromley, providing thousands of hours of formal and informal support to our residents and environment each year.

What we will do

Implement our Housing strategy to meet the needs of our growing population including delivering **1,000 new affordable quality homes**. Maximise opportunities on Council-owned land and in our renewal areas, ensuring that residential development is supported by appropriate infrastructure.

Work closely with the local Federation of Housing Associations, as well as private developers, to **ensure the housing targets we have set in the Local Plan are met**.

Ensure that the **housing needs and aspirations of more vulnerable people**, including adults who have learning disabilities and older people, feature consistently in the development and delivery of our housing plans.

Implement our Homelessness strategy, ensuring we retain and further develop the preventive and early intervention approach we are taking to tackle and prevent homelessness in Bromley. Working in partnership to challenge some of the main factors leading to homelessness in the borough – including relationship breakdown; domestic violence; and parents ceasing to provide homes for their children.

Seek to **reduce use of temporary accommodation** and improve the temporary housing options available to people in Bromley who have been accepted as statutorily homeless, reducing reliance on nightly paid accommodation where possible, increasing the supply of self-contained accommodation and improving the quality of temporary housing options provided to homeless people.

Encourage development which **enables people to have a greater stake in their local community** by building up equity in their home and encouraging policies and infrastructure that enables remote and home working.



We aim to make Bromley a place where people choose to live, work, shop and enjoy its amenities. We will:

Implement our Regeneration strategy and Economic Development plan, improving the public realm in Bromley and progressing our vision to build on the borough's heritage so that it continues to represent the best of town and country.

Maintain our strong focus on **encouraging and enabling further economic growth and regeneration in Bromley**, encouraging our business investment districts and our town centres as great places for business, enterprise, and social enterprise to prosper.

Facilitate the development of digital infrastructure in the borough, which will be critical to support the local economy strategy to meet the growing digital needs of businesses and homes, through our Digital Infrastructure Work Plan (DIWP).

Deliver key elements of the Local Plan, meeting the challenge of new and emerging planning reform; pursuing further economic development in the borough; protecting, conserving and enhancing Bromley's natural and built environment and enhancing opportunities for leisure, culture and community led services.

Achieve the maximum benefit to the community in the scope and use of Bromley's **Community Infrastructure Levy** and Section 106 of the Town and Country Planning Act 1990 (s106) receipts and attract further external funding to bring about long-term benefits to public spaces and local infrastructure.

Support and develop **Bromley Town Centre Market** and markets across the borough to increase footfall into our town centres and provide focal points for communities.



Ambition four

For residents to live responsibly and prosper in a safe, clean and green environment great for today and a sustainable future.

Bromley's environment is already one of the best in London, but we are determined to make it even better over the coming years. The Council has committed to becoming a 'direct' net zero carbon emission organisation by 2029. We know that a good environment leads to improved physical and mental wellbeing for our residents. Our residents need to feel safe and be safe in their homes and neighbourhoods and enjoy well kept, clean and attractive urban and rural spaces. We know that one of our greatest challenges, common to all, is to contribute to creating a more sustainable environment which benefits people today and in the future. We know that strong partnerships with our residents are crucial to meeting this ambition, particularly through our 'friends initiatives' and use of volunteers.



Where are we now?

Total rates of crime in Bromley are below both London and national levels, although crime remains an important concern of residents. Bromley's community safety strategy has had a strong focus on reducing antisocial behaviour and tackling gangs and serious youth violence, taking an intelligence-led partnership approach both with the police and also local residents to tackle these issues.

With some 168 open spaces, parks and recreation grounds in the borough, Bromley boasts some of the best green spaces in London and the borough has won multiple Green Flag Awards. Over 47,000 hours of voluntary work were undertaken by Friends of Parks groups in 2018 to 2019. More than half the borough's area is designated as green belt and Bromley is the most rural London borough. Bromley's principal and non-principal roads are some of the best maintained in London and road safety is improving.

Our residents are amongst the best across London for recycling domestic waste - over 50% is recycled. Levels of residual household waste are relatively low. Public satisfaction with street, neighbourhood and town centre cleanliness in Bromley is increasing overall. Bromley also has an excellent cultural heritage with 45 conservation areas, 800 statutorily and 1,000 locally listed buildings. Residents also have easy access to theatres, film, museums, art galleries and attractions locally and regionally.



What we will do

Work towards becoming a **direct 'net zero carbon' Council by 2029**, including making use of a recently confirmed £875,000 Council investment. Priorities include increased energy efficiency in our buildings and street lighting, a review of energy procurement and the implementation of tree planting programmes.

Encouraging residents to use renewable and sustainable energy to further reduce borough-wide carbon emissions. **Promote the use of green energy** and provide support and advice for the installation of equipment for renewable sources, such as solar, wind and ground source heat pump.

Encourage and enable Bromley residents and businesses to continue to **increase levels of recycling in the borough, reducing residual waste** and costs associated with disposal and develop strategies to encourage waste minimisation and reuse in line with circular economy principles.

Implement Bromley's Air Quality Action Plan, including increasing access to electric vehicle charging points and tackling vehicle 'idling' through use of fixed penalty notices, and making best use of grants from the Government and other sources to increase the network of electric charging points across the borough.

Protect and improve the environment through effective and responsible enforcement addressing issues, including **environmental protection, pollution, planning and parking enforcement**.

Continue to manage our extensive road network effectively and efficiently, keeping our roads safe and implementing strategies to improve parking in the borough, including the addition of electric charging spaces.

Work with transport providers to **maximise public transport usage and connectivity for Bromley residents**. Work effectively with Transport for London (TfL) to keep our road network well maintained and with utility providers to make sure that all operations, improvements and servicing of their infrastructure are fit for purpose while causing the least disruption to our residents.

Encourage more sustainable forms of travel, including hybrid and electric vehicles, cycling, walking and delivering the longest electric bus route in London.

Ensure the **Safer Bromley Partnership strategy** adopts a **whole systems approach** to problem solving and reducing crime, disorder and antisocial behaviour, pursuing the priorities identified in our strategic assessment and engagement with residents.

Work to ensure that the London-wide policing model continues to **enable a local focus to be taken on crime and community safety** issues important to Bromley's residents and businesses. Continue to develop our relationship with local police partners to ensure effective policing is delivered in our borough, challenging police performance where required, and developing initiatives in crime hotspots.

Progress our broader community safety and public protection goals, including **tackling nuisance behaviour such as noise, fly-tipping and graffiti**.

Implement the **London Fire Brigade's Bromley Community Safety Plan**, promoting fire safety and targeting risk in the borough. Support the Fire Service's priorities to target home fire safety visits to focus on fire safety of the elderly and vulnerable and those living in Bromley's care homes. The service will also undertake water and road safety awareness within its preventive work and will focus on the engagement of young people and schools.

Sustain a clean, green and tidy environment continuing to improve the street scene across the borough and town centres for our residents and visitors.

Protect and enhance our green belt land, **implement our Parks strategy**, further developing our partnerships with residents, friends' groups and Natural England to manage and enhance our parks and green spaces.

Continue to deliver all statutory public protection duties involving consumers through **robust trading standards services, protecting vulnerable residents** and ensuring a fair, safe and genuine trading environment.

Support and regulate businesses in Bromley to **protect consumers in respect of food safety, licensing and health and safety**.

Implement our Food Safety Plan, building on improvements made to ensure timely and robust inspections and enforcement.

Ambition five

To manage our resources well, providing value for money, efficient and effective services for Bromley's residents.

To meet our ambitions, we will need to maintain a relentless focus on efficiency, outcomes of services and prudent management of our finances. Over the last few years, we have demonstrated that we can manage our money well, innovate and use our resources differently while at the same time improving services and outcomes for Bromley residents.

The Council seeks to always provide first rate public services by the most efficient, economic and effective means possible. New technology is rapidly changing the way many commercial companies and central Government operate and deliver their services. Over the past few years, the Council has sought, with considerable success, to move many services online. As the world stands at the start of what the World Economic Forum has described as the 'Fourth Industrial Revolution' there will be many areas where we can improve further our services through digitalisation.

Our approach to achieving the best value from our resources includes:

Living within our means. We are rightly expected to work within our budgets to deliver high quality services to our residents whilst ensuring the prudent and efficient management of our finances through the operation of sound finance systems and processes.

Being opportunistic and collaborative in making bids to Government and other funding sources to increase resources available to the Partnership. Lobby the Government and Government departments strongly for increased resources when we see a need or opportunity.

Recognising the importance of our workforce to the achievement of our ambitions and implementing workforce strategies which help to recruit and retain the highest quality staff for services in the borough.

Providing efficient 'customer facing' finance services, including the collection of Council Tax and Business Rates, and ensuring efficient and fair processes for residents claiming welfare and housing benefits.

Maintaining our focus on commissioning and market shaping, developing integrated and joint commissioning where it makes sense to do so, and ensuring we commission intelligently with clear outcomes in mind. Ensuring our commissioned services deliver what is expected through robust and active contract management.

Continuing to exploit the benefits of digitalisation in service delivery through a new Digital Strategy, integrating systems and processes where it is feasible and practical. The Council will learn from best practice with a view to utilising technologies which provide practical improvements to our services.

Developing information and knowledge sharing across Partnership agencies to enhance the intelligence available to all agencies in planning and evaluating our services.

Implement innovation in service delivery where good outcomes and better use of resources can be achieved, including developing the digitalisation of services where appropriate.

Working across the Partnership to **make the best use of the public estate in Bromley** utilising our own buildings as best as possible and exploring further opportunities for co-location and integration of service delivery.



How we will deliver and monitor this Plan

This plan sits at the top of our collective planning triangle. There is a Golden Thread from the highest ambitions in our Corporate Strategy through to single and joint agency strategies, Portfolio Holder Plans, service plans and staff annual appraisals. It is important that everyone working in our system understands how they contribute.

During the life of this plan, our priorities and actions will be influenced by resident and service user engagement, demand pressures and performance management, staff engagement and workforce development, risk management, changes in statutory responsibilities, pressures arising from our Medium Term Financial Strategy and national, regional and local political priorities. We will refresh our priorities and actions against our five ambitions as we go.

It is important that our Corporate Strategy improves outcomes for residents. We monitor hundreds of performance indicators across our partnership of services delivered directly and through contracts.


The following key documents have contributed to the shaping of this plan:



		AMBITION 1: CHILDREN AND FAMILIES	AMBITION 2: ADULTS AND OLDER PEOPLE	AMBITION 3: COMMUNITIES AND BUSINESSES	AMBITION 4: SAFE, CLEAN AND GREEN	AMBITION 5: RESOURCES AND EFFICIENCIES
	Bromley Council - Transforming Bromley	✓	✓	✓	✓	✓
	Bromley Council - Portfolio Plans	✓	✓	✓	✓	✓
	Bromley Local Plan			✓	✓	✓
	The London Plan	✓	✓	✓	✓	✓
	NHS SE London Sustainability and Transformation Plan	✓	✓			✓
	One Bromley – Integrated Care Plan	✓	✓			✓
	Health and Wellbeing Strategy	✓	✓			✓
	Children and Young People's Plan (CYPP)	✓		✓	✓	✓
	Children's Early Help Strategy	✓		✓	✓	✓
	Looked After Children Strategy	✓				✓
	Care Leavers Strategy	✓				✓
	Children's Roadmap to Excellence	✓				✓
	An Intergenerational Domestic Abuse Strategy	✓	✓		✓	✓
	Bromley Safeguarding Children Partnership (BSCP) Pledge	✓			✓	✓
	Bromley Safeguarding Adults Board (BSAB) Strategy		✓	✓	✓	✓

	AMBITION 1: CHILDREN AND FAMILIES	AMBITION 2: ADULTS AND OLDER PEOPLE	AMBITION 3: COMMUNITIES AND BUSINESS	AMBITION 4: SAFE, CLEAN AND GREEN	AMBITION 5: RESOURCES AND EFFICIENCIES
Ageing Well Strategy		✓	✓	✓	✓
Learning Disabilities Strategy		✓	✓	✓	✓
Mental Health and Wellbeing Strategy		✓	✓	✓	✓
Adult Social Care Roadmap to Excellence		✓			✓
Safer Bromley Partnership (SBP) Strategy	✓	✓	✓	✓	✓
Police and Crime Plan (Mayor of London)				✓	✓
Housing Strategy	✓	✓	✓		✓
Homelessness Strategy	✓	✓	✓		✓
Economic Development Plan	✓	✓	✓		✓
Regeneration Strategy			✓	✓	✓
Digital Strategy	✓	✓	✓	✓	✓
Air Quality Action Plan (AQAP)				✓	✓
Net Zero Action Plan (NZAP)				✓	✓
Open Spaces Strategy				✓	✓

The delivery monitoring of this plan will be undertaken by the Borough Partnerships, the Council's Executive and existing thematic governance structures.



For more information, contact:
Strategy, Performance and Corporate Transformation
London Borough of Bromley
Civic Centre, Stockwell Close
Bromley BR1 3UH



Report No.
CSD21112

London Borough of Bromley

PART ONE - PUBLIC

Decision Maker: **COUNCIL**

Date: **Monday 18 October 2021**

Decision Type: Non-Urgent Non-Executive Non-Key

Title: **HEALTH AND WELLBEING BOARD ANNUAL REPORT 2020/21**

Contact Officer: Graham Walton, Democratic Services Manager
Tel: 0208 461 7743 E-mail: graham.walton@bromley.gov.uk

Chief Officer: Ade Adetosoye OBE

Ward: All

1. Reason for report

- 1.1 At its meeting on 29th April 2021 the Health and Wellbeing Board received a draft report from its chairman, Cllr David Jefferys, summarising the Board's work throughout the 2020/21 Council year. The final version of the report is attached for consideration by full Council.

2. **RECOMMENDATION**

Council is recommended to receive and note the Health and Wellbeing Board's Annual Report for 2020/21.

Impact on Vulnerable Adults and Children

1. Summary of Impact: Not applicable
-

Corporate Policy

1. Policy Status: Existing Policy:
 2. BBB Priority: Excellent Council Healthy Bromley:
-

Financial

1. Cost of proposal: No Cost:
 2. Ongoing costs: Not Applicable
 3. Budget head/performance centre: Not Applicable
 4. Total current budget for this head: Not Applicable
 5. Source of funding: Not Applicable
-

Personnel

1. Number of staff (current and additional): Not Applicable
 2. If from existing staff resources, number of staff hours: Not Applicable
-

Legal

1. Legal Requirement: Statutory Requirement:
 2. Call-in: Not Applicable: Reports to full Council are not subject to call-in.
-

Procurement

1. Summary of Procurement Implications: Not Applicable
-

Customer Impact

1. Estimated number of users/beneficiaries (current and projected): Not Applicable
-

Ward Councillor Views

1. Have Ward Councillors been asked for comments? Not Applicable
2. Summary of Ward Councillors comments: Not Applicable

Non-Applicable Sections:	All
Background Documents: (Access via Contact Officer)	Health and Wellbeing Board 29 April 2021 - Minutes

Health and Wellbeing Board Chairman's Annual Report 2020/21

Chairman: Cllr. Dr David Jefferys
Vice-Chairman: Cllr. Robert Evans

The Covid -19-SARS 2 global pandemic has placed public health and wellbeing at the very centre of our national focus over the last year. The Bromley HWB was one of the first virtual meetings held by Bromley Council in April 2020 just after the first lockdown began. During the municipal year 2020/21 the Board has held 5 virtual meetings. The virtual format has overall worked well and there has been a much-increased attendance from all Board Members and from other stakeholders. This is excellent given the great pressures on health care partners.

Health and Wellbeing Boards (HWB) were established in 2012 through the Health and Social Care Act Chapter 2 with a defined composition and a range of statutory responsibilities. Boards are required to oversee the development of a Joint Strategic Needs Assessment (JSNA), receive, discuss, and publish the reports of the Adult and the Children's Safeguarding Boards and undertake a Pharmaceutical Strategic Needs Assessment (PSNA). The Board also has a statutory duty to overview and sign off on the Better Care Fund and Improved Better Care Fund.

The Bromley HWB undertook all these statutory roles during the municipal year. The Safeguarding reports highlighted important learnings from the effects of the pandemic, and these were discussed in depth. During the year Lynn Selwood resigned as the Independent Chair of the Adult Safeguarding Board. The Board wrote to thank her for her great contributions to the work of the Board and to the residents of Bromley. Teresa Bell has been appointed as the new Independent Chair of the Safeguarding Board and we were pleased to welcome her to her first HWB meeting in February. Work recommenced on the PSNA submission which had been paused by the Government because of the first wave of the pandemic. Subsequently the required report has been postponed by the Government because of the impact of the second wave of the Covid-19 pandemic. This important report will be an important topic for the municipal year 21/22.

The Board received in depth reports on the response to the pandemic from health and care partners at every meeting. At the July meeting the HWB asked if it could receive detailed weekly briefings, which were readily provided and subsequently issued to all Councillors. This proved to be most valuable. The Board discussed a range of specific issues related to the pandemic as it evolved. These included the plans and procedures for track and trace in Bromley at the July meeting, the plans for influenza immunisation for last winter, when it was feared that influenza might add significantly to the impact of the Covid-19 pandemic (in the event this proved to be a very low level flu season). We also provided comments on the Bromley Council Pandemic communication programme. With the impressive roll out of wider testing in the Borough, selected members visited to safely observe the testing sites. The development of the several vaccines during the autumn has been a remarkable scientific achievement. We discussed the potential immunisation rollout in our

December 3rd (2020) meeting and closely followed the very impressive delivery of the vaccine programme across Bromley. We were given weekly updates on the programme and were delighted to see the biweekly comprehensive updates to Councillors which was set up mainly at our suggestion. The cooperation and collaboration by all partners including the third sector and so many volunteers have been very impressive, and the Board has expressed its admiration and gratitude to all involved.

The Board has also considered the wider impact of the pandemic. This will be a very important on-going matter of the highest priority. We have considered mental health resilience, the provisions for managing the long Covid syndrome and the physical and mental long-term sequelae of this virus. The impact on loneliness and social isolation and the impact on both vulnerable adults and children and adolescents were considered in depth. We received a confidential briefing from the BSCP and the Strategic Threats to our younger residents. There was also a detailed update on mental health from Oxleas NHS Foundation Trust.

During the year we agreed to appoint King's College Hospital NHS Foundation Trust, Oxleas NHS Foundation Trust and Bromley Healthcare Partners to become participating (but non-voting) observers of the Board. The pandemic meant that progress on some of the JSNA priority tasks were delayed as staff were engaged on other priority tasks, but we did not lose sight of these since the Priority Area Action Plan issues cover cancer services, dementia, childhood obesity, diabetes, adolescent mental health and falls in the elderly. All these have been impacted either directly or indirectly by the pandemic.

Attention was also given non-Covid matters amongst which the following were considered. These included the adoption of the Bromley Public Health Annual Report for the civic year 19/20; there were regular updates from the Integrated Commissioning Board; the development of the Bromley Health and Wellbeing Centre; Health and Wellbeing issues for armed forces veterans living in Bromley. There was also a presentation from the London Child Obesity Taskforce. This led the Board to establish a new Obesity Task and Finish Group. This recognised that obesity was a major risk factor for both the mortality and morbidity from the Sars-2 Coronavirus and put in place a programme to encourage residents to reduce weight under the slogan "don't wait to lose weight". This was launched in September and a further promotion was made in January / February 2021.

The Chairs of the London HWBs previously met bimonthly to exchange best practice and be briefed on pan London initiatives. These meetings were increased to monthly (and for a period fortnightly meetings) to address issues of the pandemic. The Chairman attended all these meetings on behalf of Bromley.

I would like to highlight the contribution all Members of the Board made during this most challenging year. The Board brings together the key partners in the health sector, social care, the voluntary and third sector along with Healthwatch Bromley and the Independent Chairs of the Children and the Adult Safeguarding Boards. This

model served us very well during the pandemic. The engagement with the third sector and the amazing network of volunteers across Bromley is particularly welcomed and appreciated.

Looking to the future the Board already had a full agenda. The Covid-19 pandemic has emphasised the critical role of public health. It has accentuated several matters of concern already being taken forward, especially dementia care and mental health and mental wellbeing. It has been encouraging to see the increase in walking, physical exercise and cycling during the lock down periods and the support neighbours and local communities have given to the lonely and isolated. We are seeing our parks being appreciated as places to promote wellbeing. There is a renewed attention upon obesity as a major public health imperative. Public Health has become an essential part of our lives and this is likely to remain over this year and into the future. In April 2021 the pandemic is easing but is not over, we face major challenges with the restart of NHS services, the next phase of the Covid-19 immunisation programme and the possibility of vaccine booster doses being required to maintain immunity levels and to combat possible new variants of the virus alongside the enhanced flu immunisation programme for winter 21/22. We can be confident however that the Bromley HWB is well placed to take forward the agenda of further improving health and wellbeing for all who live and work in Bromley.

Councillor David Jefferys
Chairman, Health and Wellbeing Board

This page is left intentionally blank

Report No.
CSD21109

London Borough of Bromley

PART ONE - PUBLIC

Decision Maker: **COUNCIL**

Date: **Monday 18 October 2021**

Decision Type: Non-Urgent Non-Executive Non-Key

Title: **COUNCILLOR ATTENDANCE 2020/21**

Contact Officer: Graham Walton, Democratic Services Manager
Tel: 0208 461 7743 E-mail: graham.walton@bromley.gov.uk

Chief Officer: Ade Adetosoye OBE, Chief Executive

Ward: All

1. Reason for report

1. At its meeting on 15th December 2009, the Council agreed that details of Councillor attendance at meetings be published at the end of each Council year. The data for 2020/21 has now been collated and is set out in this report set out in this report. The data covers formal meetings of the Council, the Executive, Committees and Sub-Committees, plus various other meetings where appropriate, including executive and non-executive working groups.

2. **RECOMMENDATION)**

Council is asked to note the Councillor attendance data for meetings in the 2020/21 Council year.

Impact on Vulnerable Adults and Children

1. Summary of Impact: Not Applicable
-

Corporate Policy

1. Policy Status: Existing Policy
 2. BBB Priority: Excellent Council :
-

Financial

1. Cost of proposal: No Cost
 2. Ongoing costs: Not Applicable
 3. Budget head/performance centre: Democratic Representation
 4. Total current budget for this head: Not Applicable
 5. Source of funding: 2020/21 revenue budget
-

Personnel

1. Number of staff (current and additional): Not Applicable
 2. If from existing staff resources, number of staff hours: Not Applicable
-

Legal

1. Legal Requirement: None:
 2. Call-in: Not Applicable: Council decisions are not subject to call-in
-

Procurement

1. Summary of Procurement Implications: Not Applicable
-

Customer Impact

1. Estimated number of users/beneficiaries (current and projected): Not Applicable
-

Ward Councillor Views

1. Have Ward Councillors been asked for comments? Yes
2. Summary of Ward Councillors comments: Not Applicable

3. COMMENTARY

- 3.1 The Constitution Improvement Working Group in its third report, presented to full Council on 15th December 2009, recommended that information about Councillor attendance at meetings should be recorded and published annually. This information has always been available through the published minutes of meetings, but had not previously been brought together in one document. The following recommendation was adopted by Council -

“That attendance information be routinely collected and that it be published annually at the end of the Municipal Year including details of apologies for absence and the appointment of substitutes.”

- 3.2 The meetings covered are listed in appendix A; these are all Council, Committee, Sub-Committee and Executive/Portfolio Holder meetings during the Council year 2020/21 plus a variety of other meetings. During this year, all meetings were required to be held online. A schedule covering attendance of individual Members is attached as appendix B.
- 3.3 The attendance data presented in this report does not purport to reflect all the variety of work that Councillors carry out. The data in appendix B does not include attendance at a variety of more informal meetings, pre-meetings and callovers, partnership meetings, official engagements carried out by the Mayor and Deputy Mayor, or any of the wide range of ward-related activities and case-work carried out by Councillors throughout the year.

Non-Applicable Sections:	Impact on Vulnerable Adults and Children/Policy/ Financial/Personnel/Legal/Procurement
Background Documents: (Access via Contact Officer)	Minutes of meetings held during 2020/21

Appendix A

Meeting Name	Number of Meetings in 2019/20	Number of meetings in 2020/21
Council, Committees & Sub-Committees		
Council	6	6
General Purposes & Licensing	6	7
Appeals Sub-Committee	5	2
Audit Sub-Committee	3	3
Licensing Sub-Committee	6	4
Local Joint Consultative Committee	1	1
Pensions Committee	7	5
Development Control Committee	6	8
Plans Sub-Committees (x4)	24	25
Standards Committee	3	2
Urgency Committee	3	0
PDS Committees and Sub-Committees		
Adult Care & Health PDS Committee	5	5
Children, Education & Families PDS Committee	5	4
Environment & Community PDS Committee	4	5
Executive, Resources & Contracts PDS Committee	8	10
Public Protection & Enforcement PDS Committee	4	3
Renewal, Recreation & Housing PDS Committee	6	7
CEF Budget & PM Sub-Committee	0	1
Health Scrutiny Sub-Committee	3	4
OHSEL Joint Scrutiny Committee	2	2
Executive meetings		
Executive	9	5
Other Meetings		
Health & Wellbeing Board	5	5
SACRE	3	2
Bromley Economic Partnership	4	3
Safer Bromley Partnership	3	1
Chief Executive Remuneration Panel	1	1
Foster Panel	18	13
PDS Working Groups		
School Places WG	1	0
TOTAL	150	134

This page is left intentionally blank

Appendix B

Councillor Attendance at formal meetings 2020/21 (13th May 2020 to 17th May 2021)

Please note that this information relates only to formal meetings of the Council, the Executive, Committees and Sub-Committees and does not attempt to reflect the overall workload of Councillors. Councillors have an extensive workload beyond formal meetings, including a varied range of meetings not listed below, and events in their own wards. They also deal with extensive casework, visit schools and care homes and represent the borough on the boards of local and London-wide organisations and charities. All meetings were held online during this period due to covid restrictions.

	Present (Figures in brackets are for attendance as a substitute)	Absent (Figures in brackets are for apologies received)	Percentage meetings attended (excludes as a visiting Member)	Present as Visiting Member	Total meetings attended	Notes/Councillor comments
Cllr Marina Ahmad	10	6 (4)	62	0	10	Resigned from the Council 8 March 2021
Cllr Gareth Allatt	52	6 (5)	90	0	53	
Cllr Vanessa Allen	23	0	100	3	26	
Cllr Graham Arthur	11	0	100	11	22	
Cllr Kathy Bance	13	2 (2)	87	2	15	
Cllr Yvonne Bear	21	0	100	16	37	
Cllr Julian Benington	23	2 (1)	92	3	26	
Cllr Nicholas Bennett	11 (4)	0	100	2	13	
Cllr Kim Botting	15	0	100	1	16	
Cllr Mike Botting	13	0	100	0	13	
Cllr Katy Boughey	26	0	100	1	27	
Cllr Mark Brock	24	2 (2)	92	0	24	
Cllr Kevin Brooks	27 (2)	0	100	0	27	
Cllr David Cartwright	18	1 (1)	95	1	19	
Cllr Mary Cooke	37	0	100	1	38	
Cllr Aisha Cuthbert	10 (1)	1 (1)	91	4	14	
Cllr Peter Dean	20	3 (1)	87	3	23	
Cllr Ian Dunn	28 (1)	0	100	5	33	
Cllr Nicky Dykes	27	4 (4)	87	0	27	
Cllr Judi Ellis	29	2 (1)	94	0	29	
Cllr Robert Evans	42 (2)	4 (4)	91	2	44	
Cllr Simon Fawthrop	39 (1)	1 (1)	98	9	48	
Cllr Peter Fortune	10	1 (1)	91	4	14	
Cllr Kira Gabbert	18	2 (2)	90	8	26	
Cllr Hannah Gray	10	0	100	0	10	Mayor 2020/21
Cllr Will Harmer	21	2 (2)	91	2	23	
Cllr Christine Harris	23 (1)	1 (1)	96	4	27	

	Present <i>(Figures in brackets are for attendance as substitute)</i>	Absent <i>(Figures in brackets are for apologies received)</i>	Percentage meetings attended	Present as Visiting Member	Total meetings attended	Councillor comments
Cllr Colin Hitchins	15 (1)	2 (2)	88	0	15	
Cllr S H-Thresher	16	1 (1)	94	0	16	
Cllr W H-Thresher	16	1 91)	94	4	20	
Cllr Simon Jeal	15	0	100	0	15	
Cllr David Jefferys	26	0	100	0	26	
Cllr Charles Joel	18	1 (1)	95	0	18	
Cllr Josh King	26	1 (1)	96	0	26	
Cllr Kate Lymer	19	0	100	2	21	
Cllr C.Marlow	28	0	100	2	30	
Cllr Robert Mcilveen	13	2 (2)	87	0	13	
Cllr Russell Mellor	30	1 (1)	97	1	31	
Cllr Alexa Michael	35	1 (1)	97	1	36	
Cllr Peter Morgan	13	0	100	10	23	
Cllr Keith Onslow	38 (3)	1 (1)	97	3	41	
Cllr Tony Owen	39 (1)	0	100	1	40	
Cllr Angela Page	26 (2)	2 (2)	93	7	33	
Cllr Chris Pierce	10	0	100	0	10	
Cllr Neil Reddin	27	0	100	0	27	
Cllr Will Rowlands	12	5 (4)	71	2	14	Missed some meetings due to Covid-19
Cllr M. Rutherford	18	4 (3)	82	6	24	
Cllr Richard Scoates	22	1 (1)	96	1	23	
Cllr Suraj Sharma	20	2 (1)	91	4	24	
Cllr Colin Smith	12 (1)	1 (1)	92	12	24	
Cllr Diane Smith	16	0	100	9	25	
Cllr Gary Stevens	19	0	100	1	20	
Cllr Melanie Stevens	28	0	100	0	28	
Cllr Harry Stranger	19	1 (1)	95	0	19	
Cllr Kieran Terry	16	1 (1)	94	10	26	
Cllr Michael Tickner	20	2 (0)	91	1	21	
Cllr P. Tunnicliffe	18	0	100	5	23	
Cllr Michael Turner	29	4 (1)	88	0	29	
Cllr Stephen Wells	33	3 (2)	92	1	34	Deputy Mayor 2020/21
Cllr Angela Wilkins	23	0	100	10	33	